

SONY®

NETWORK INTERFACE BOARD

HKSR-5804

- If this board is installed incorrectly, personal injury or damage to peripheral items may occur due to fire, shock, or other accidental circumstances. To avoid such risks, installation should be performed by trained service technicians.
- Refer to the SRW-5800's Operation Manual for instructions on how to operate the SRW-5800 after installing this board.

To the technician installing the board

- Please refer to the Installation Manual supplied with this product for installation instructions.
- Before installing the board, be sure to turn off the SRW-5800 and wait until the internal temperature drops.

OPERATION MANUAL
1st Edition (Revised 2)

English

For the customers in the U.S.A.

This equipment has been tested and found to comply with the limits for a Class A digital device, pursuant to Part 15 of the FCC Rules. These limits are designed to provide reasonable protection against harmful interference when the equipment is operated in a commercial environment. This equipment generates, uses, and can radiate radio frequency energy and, if not installed and used in accordance with the instruction manual, may cause harmful interference to radio communications. Operation of this equipment in a residential area is likely to cause harmful interference in which case the user will be required to correct the interference at his own expense.

You are cautioned that any changes or modifications not expressly approved in this manual could void your authority to operate this equipment.

All interface cables used to connect peripherals must be shielded in order to comply with the limits for a digital device pursuant to Subpart B of Part 15 of FCC Rules.

This device complies with Part 15 of the FCC Rules. Operation is subject to the following two conditions: (1) this device may not cause harmful interference, and (2) this device must accept any interference received, including interference that may cause undesired operation.

For the customers in Canada

This Class A digital apparatus complies with Canadian ICES-003.

For the customers in Europe

This product with the CE marking complies with the EMC Directive issued by the Commission of the European Community.

Compliance with this directive implies conformity to the following European standards:

- EN55103-1 : Electromagnetic Interference(Emission)
- EN55103-2 : Electromagnetic Susceptibility(Immunity)

This product is intended for use in the following Electromagnetic Environment: E4 (controlled EMC environment, ex. TV studio).

For the customers in Europe, Australia and New Zealand

WARNING

This is a Class A product. In a domestic environment, this product may cause radio interference in which case the user may be required to take adequate measures.

声明

此为A级产品，在生活环境中，该产品可能会造成无线电干扰。在这种情况下，可能需要用户对其干扰采取切实可行的措施。

For the customers in Europe

The manufacturer of this product is Sony Corporation, 1-7-1 Konan, Minato-ku, Tokyo, Japan.

The Authorized Representative for EMC and product safety is Sony Deutschland GmbH, Hedelfinger Strasse 61, 70327 Stuttgart, Germany.

This apparatus shall not be used in the residential area.

Pour les clients au Canada

Cet appareil numérique de la classe A est conforme à la norme NMB-003 du Canada.

Pour les clients en Europe

Ce produit portant la marque CE est conforme à la Directive sur la compatibilité électromagnétique (EMC) émise par la Commission de la Communauté européenne. La conformité à cette directive implique la conformité aux normes européennes suivantes:

- EN55103-1: Interférences électromagnétiques (émission)
- EN55103-2: Sensibilité électromagnétique (immunité)

Ce produit est prévu pour être utilisé dans l'environnement électromagnétique suivant: E4 (environnement EMC contrôlé, ex. studio de télévision).

Pour les clients en Europe, Australie et Nouvelle-Zélande

AVERTISSEMENT

Il s'agit d'un produit de Classe A. Dans un environnement domestique, cet appareil peut provoquer des interférences radio, dans ce cas l'utilisateur peut être amené à prendre des mesures appropriées.

Pour les clients en Europe

Le fabricant de ce produit est Sony Corporation, 1-7-1 Konan, Minato-ku, Tokyo, Japon.

Le représentant autorisé pour EMC et la sécurité des produits est Sony Deutschland GmbH, Hedelfinger Strasse 61, 70327 Stuttgart, Allemagne.

Ne pas utiliser cet appareil dans une zone résidentielle.

Für Kunden in Europa

Dieses Produkt besitzt die CE-Kennzeichnung und erfüllt die EMV-Richtlinie der EG-Kommission.

Angewandte Normen:

- EN55103-1: Elektromagnetische Verträglichkeit (Störaussendung)
- EN55103-2: Elektromagnetische Verträglichkeit (Störfestigkeit)

Für die folgende elektromagnetische Umgebung: E4 (kontrollierter EMV-Bereich, z.B. Fernsehstudio).

Für Kunden in Europa, Australien und Neuseeland

WARNUNG

Dies ist eine Einrichtung, welche die Funk-Entstörung nach Klasse A besitzt. Diese Einrichtung kann im Wohnbereich Funkstörungen verursachen; in diesem Fall kann vom Betreiber verlangt werden, angemessene Maßnahmen durchzuführen und dafür aufzukommen.

Für Kunden in Europa

Der Hersteller dieses Produkts ist Sony Corporation, 1-7-1 Konan, Minato-ku, Tokyo, Japan.

Der autorisierte Repräsentant für EMV und Produktsicherheit ist Sony Deutschland GmbH, Hedelfinger Strasse 61, 70327 Stuttgart, Deutschland

Dieser Apparat darf nicht im Wohnbereich verwendet werden.

Table of Contents

Overview	5
Features of the HKSR-5804	5
System Configuration Example.....	6
Locations of Parts	6
Setting Up the System	7
Overview of the Setup Procedure	7
Preparations	7
Network Settings	8
NFS Server Setup	8
VTR Format Settings.....	9
VTR Remote Mode Setup	9
Accessing the VTR From the Web Client	9
Mounting the NFS Server From the Web Application Through the Web Browser.....	10
Proxy and GUI Settings	11
Proxy Setup	11
Saving and Recalling the GUI Setup Data.....	13
Importing Files.....	14
Overview of the Import Procedure	14
File Format Setup	14
File Name and Directory Setup	17
Setting IN/OUT Points on a Tape	19
Importing the Clips.....	21
Exporting Files	23
Overview of the Export Procedure	23
VTR Setup	23
Selecting the Clip To Be Exported.....	24
Specifying the Recording Start Position (IN Point) on the Tape	27
Exporting the Clips.....	27
Controlling the VTR.....	29
VTR CONTROL Window	29
Warning Messages.....	29
List of Keyboard Shortcuts.....	29
VIEWER Window	30
Controlling the On-board Functions	31
Downconverter Settings	31
Lookup Table (LUT) Settings	32
Color Control Function for the Monitor Output	33

Outputting Tele-File Information.....	34
Other Functions	36
Checking the Network Functions of This Board	36
Displaying the IP Address of the Web Client	36
Log File Management	36
Using the Export Log Files	36
Automatic Execution Using a Job File.....	38
Dubbing Uncompressed Data	38
Specifications.....	40
Appendix.....	41
LUT File Formats Applicable to This Board	41
Job File Samples	42

Overview

The HKSR-5804 is a network interface board that is installed into the SRW-5800 HD Digital Videocassette Recorder (VTR).

With the HKSR-5804 board installed, the VTR can be directly connected to a network where image data can be transferred as the DPX ¹⁾ files between the VTR and other devices. The VTR, with its uncompressed recording function, can also be used to back up and archive 2K/4K ²⁾ material.

1) A digital image file format that is generally used by image processing and editing equipment. In addition to DPX, this board is compatible with the CIN (Cineon) and TIFF file formats.

2) This board supports any size of data between HD and 4K (4096 × 3112).

Note

The optional board configuration of the VTR (SRW-5800) determines the file formats that are supported. The HKSR-5804 is operable only with the file formats that the VTR supports.

Features of the HKSR-5804

Direct connection of the VTR into a network

Installing the HKSR-5804 in the VTR makes it possible to instantly connect the VTR to a server or non-linear editor within a Gigabit Ethernet (GbE) environment.

The file transfer can simply be controlled by using the general web browser on the PC/workstation. It is easy to make a correction to the material on the tape—retrieve the relevant tape material over the network, manipulate it, and then rewrite the corrected image back to tape.

File conversion on the VTR

The HKSR-5804 provides conversion between video and file on the VTR, which allows direct file transfer to a server or non-linear editor. Video signal (HDCAM-SR format) on the VTR is converted into image files and can be transferred over the network.

Then, image files transferred from the network to the VTR are converted back into HDCAM-SR format video signal and re-recorded to the tape.

The file format is DPX, which is widely used in digital intermediate (DI) workflow.

2K/4K uncompressed data recording

2K/4K material (DPX files) can be transferred via Gigabit Ethernet and recorded to tape as uncompressed data. The material can also be viewed on an HD monitor.

Transferring the MXF files as the material

Pictures and the audio data on the tape can be transferred as the MXF files.

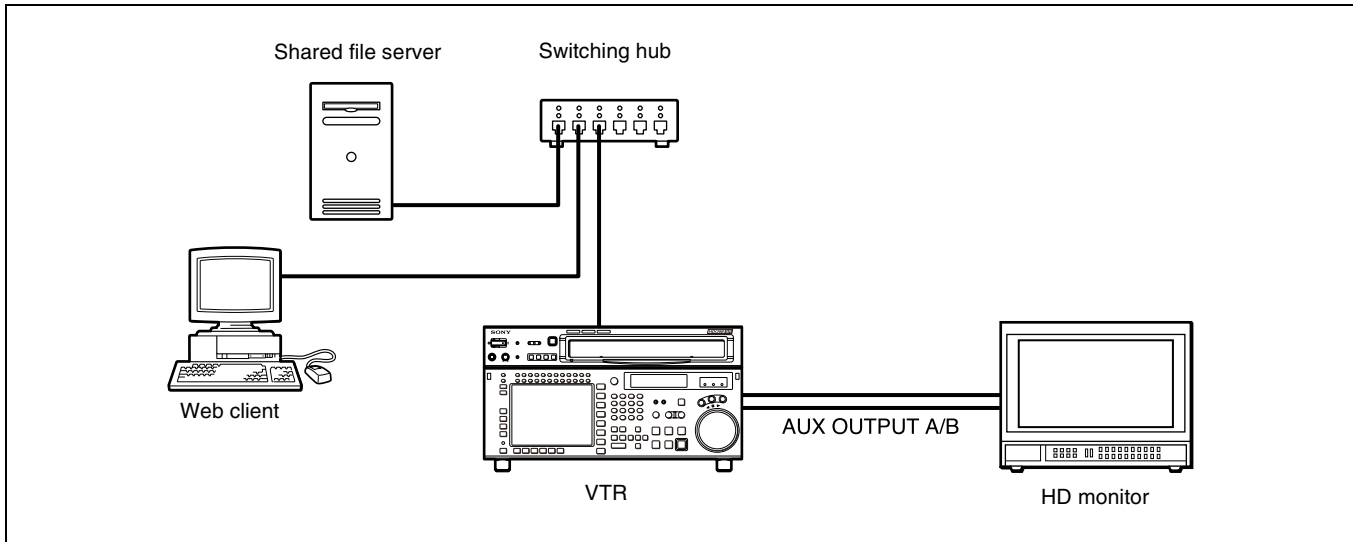
With the HKSR-5804, MXF files can be transferred from the HDCAM tape as well.

Note

The HKSR-5804 can transfer the material as the MXF files only when the signal format is 4:2:2 YCbCr.

System Configuration Example

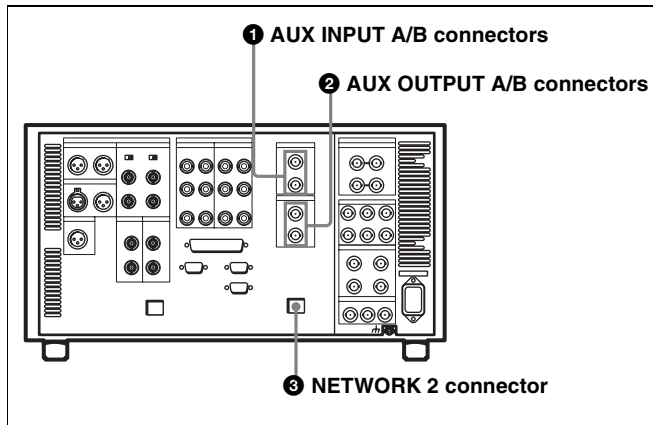
The following illustration shows an example of a network system configuration with an SRW-5800 incorporating the HKSR-5804.



Locations of Parts

This section explains the connectors that are added to the connector panel of the SRW-5800 when the HKSR-5804 is installed.

For details on the other panel connectors, refer to the Operation Manual supplied with the SRW-5800.



1 AUX INPUT A/B connectors (BNC type)

Use the A connector for dubbing uncompressed data.

For details, see “Dubbing Uncompressed Data” on page 38.

2 AUX OUTPUT (monitor output) A/B connectors (BNC type)

For outputting video signals to the HD monitor.

While dubbing uncompressed data, the data stream is output from the A connector.

For details on how to specify the type of output signal, see “To specify the type of signal output from the AUX OUTPUT connectors” on page 9.

3 NETWORK (network) 2 connector

For transferring files between the shared server and VTR and for controlling the VTR from the web client.

CAUTION

- For safety, do not connect the connector for peripheral device wiring that might have excessive voltage to this port. Follow the instructions for this port.
- When you connect the NETWORK cable of the unit to peripheral device, use a shielded-type cable to prevent malfunction due to radiation noise.

ATTENTION

- Par mesure de sécurité, ne raccordez pas le connecteur pour le câblage de périphériques pouvant avoir une tension excessive à ce port. Suivez les instructions pour ce port.
- Lors de la connexion du câble NETWORK de l’appareil au périphérique, utilisez un câble blindé afin d’empêcher tout dysfonctionnement dû au bruit de rayonnement.

VORSICHT

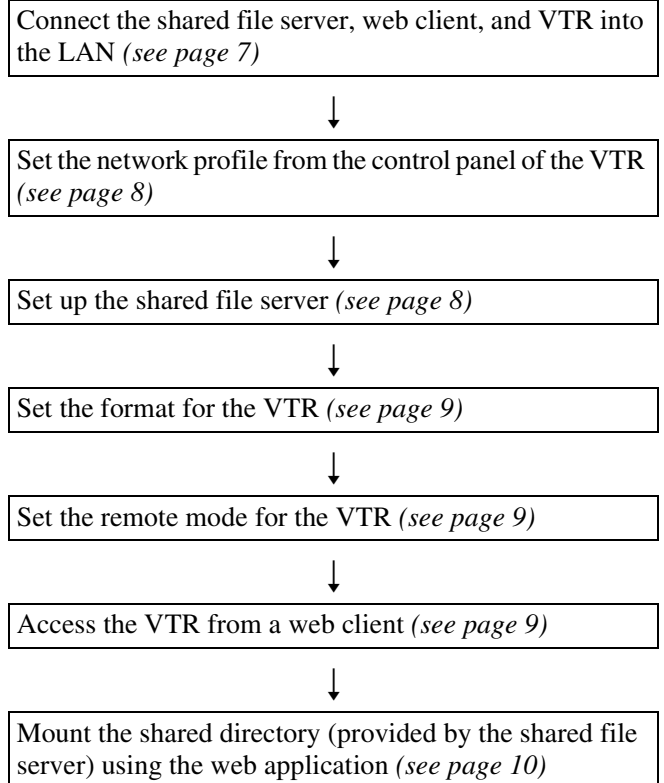
- Aus Sicherheitsgründen nicht mit einem Peripheriegerät-Anschluss verbinden, der zu starke Spannung für diese Buchse haben könnte. Folgen Sie den Anweisungen für diese Buchse.

- Verwenden Sie beim Anschließen des NETWORK-Kabels des Geräts an ein Peripheriegerät ein abgeschirmtes Kabel, um Fehlfunktionen aufgrund von Störungen zu vermeiden.

Setting Up the System

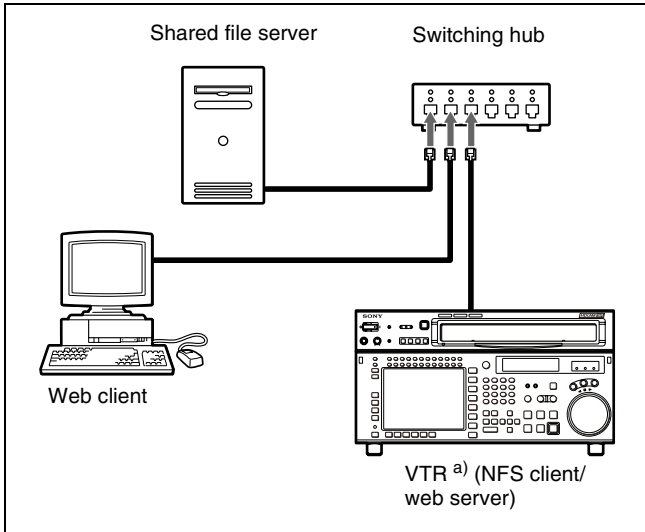
Overview of the Setup Procedure

The following diagram gives an overview of the procedure for setting up the system.



Preparations

Connect the shared file server, web client and VTR within the same segment of the LAN (Gigabit Ethernet), as illustrated below.



a) SRW-5800 installed with the HKSR-5804

Shared file server

The shared file server provides disk space for the storage of picture data transmitted between the VTR and the file server.

Any operating system can be used on the server, as long as it supports NFS ¹⁾ server functions.

1) This board supports CIFS as well as NFS. In this manual, both the NFS server and the CIFS server are referred to as "NFS server."

Web client

The web client controls the VTR through the web application provided on the VTR. The computer can serve as both web client and NFS server at the same time. Any operating system can be used on the web client, as long as a web browser (Internet Explorer, Safari, Firefox, etc.) is installed.

Note

Only one NFS server can be connected to one VTR. Up to five web clients can be connected to one VTR.

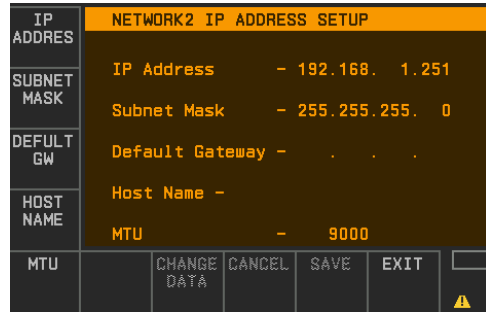
Network Settings

Network settings can be made using the OTHERS CHECK menu in the MAINTENANCE menu provided on the VTR.

For details on the MAINTENANCE menu of the VTR, refer to the Installation Manual supplied with the SRW-5800.

- 1 On the VTR, open the NETWORK SETUP menu from the OTHERS CHECK menu. Then, press the ALT button to open the NETWORK2 SETUP menu.

- 2 Open the NET2 IP menu from the NETWORK2 SETUP menu.



- 3 Set the following menu items.

IP Address*: IP address of the VTR (example: 192.168.1.251)

Subnet Mask*: subnet mask of the VTR (example: 255.255.255.0)

Default Gateway: default gateway of the VTR (example: 192.168.1.254)

Host Name: host name of the VTR (example: srw)

MTU*: maximum transmission volume in bytes (example: 9000)

* Required item

- 4 Open the UID/GID SETUP menu from the NETWORK2 SETUP menu and set the user ID and group ID of the VTR.

User ID: user ID of the VTR (example: 500)

Group ID: group ID of the VTR (example: 500)

Note

Consult your NFS server administrator to set the two items above properly.

- 5 Open the DOMAIN SETUP menu from the NETWORK2 SETUP menu and set the following items, if necessary.

Domain Name: Domain name of the network

DNS Server 1: IP address of DNS server 1

DNS Server 2: IP address of DNS server 2

DNS Server 3: IP address of DNS server 3

DNS Server 4: IP address of DNS server 4

NFS Server Setup

Permission must be set properly on the NFS server for the shared directory mounted by the VTR to allow the VTR (user) to execute (x), read (r), and write (w) contents on the shared directory.

The user ID and group ID of the VTR can be set from the control panel of the VTR.

For details on NFS server settings, consult your system administrator.

VTR Format Settings

The VTR format can be set with the SYSTEM MENU from the OTHERS CHECK menu within the MAINTENANCE menu on the VTR.

For details on the MAINTENANCE menu of the VTR, refer to the Installation Manual supplied with the SRW-5800.

Note

All the formats described below are applicable only to HDCAM-SR-format tape.

- 1 On the VTR, open the SYSTEM MENU from the OTHERS CHECK menu.

SYSTEM MODE	SYSTEM MENU					
	1080/23.98PsF 444SQ RGB					
SYSTEM SCAN	[F1]SYSTEM MODE:	1080				
	[F2]SYSTEM SCAN MODE:	PsF				
SYSTEM FRAME	[F3]SYSTEM FRAME:	23.98Hz				
	[F4]SYSTEM SIGNAL MODE:	444SQ RGB				
SYSTEM SIGNAL	[F5]3G-SDI:					
	[F6]FRAME CONVERT:	422 1080/23.98P				
	[F7]ACTIVE LINE(HDCAM):	OFF				
	[F8]CANCEL [F9]Exec of Reset VTR Sys	(STOP & STNDBY OFF/EJECT)				
3G/DUAL	FRAME CNVERT	ACTIVE LINE	CANCEL	EXEC	EXIT	REMA

- 2 Set the items in the menu according to the format that you want to use.

For downconverting 4K/2K files to record in HD format, set the items to the values indicated in the columns below “Compression (HDCAM-SR) format” header in the table below.

	Compression (HDCAM-SR) format	Uncompression (DATA) format
SYSTEM MODE	1920 × 1080	DATA
SYSTEM SCAN	Psf or interlace	Psf
SYSTEM FRAME	23.98, 24, 25, 29.97, or 30	25 or 29.97
SYSTEM SIGNAL	444SQ, 422, or 444HQ	—

The formats described in the table above are the VTR formats that the HKSR-5804 supports.

Note

The AUX output from the HKSR-5804 is not guaranteed when the SRW-5800 is set to a system format other than the ones described in the table above.

To specify the type of signal output from the AUX OUTPUT connectors

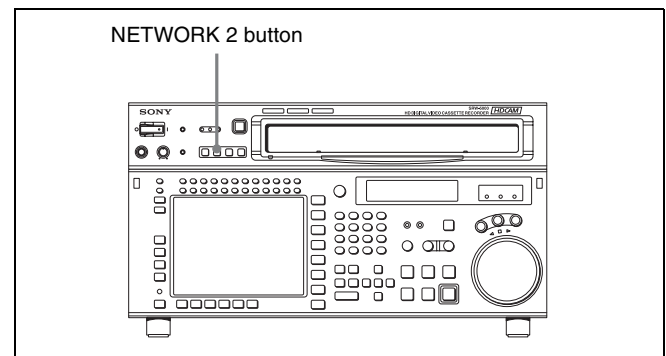
Perform the procedure below to specify the type of SDI signal output from the AUX OUTPUT A/B connectors.

- 1 On the VTR, open the 3G/DUAL menu from the SYSTEM MENU, and then open the AUX OUTPUT menu from the 3G/DUAL menu.
- 2 Select the appropriate signal type.
 - DUAL:** Dual link (conventional 1.5G dual mode)
 - 3G:** 3G output

Note

The monitor output (4:2:2 single ×2) is not guaranteed if “3G” is selected in step 2 above and “YCbCr” is specified as the signal in the MONITOR tag display of the web application or as the color space in menu item “B02: NW MON CTRL” in the VTR SETUP menu of the SRW-5800.

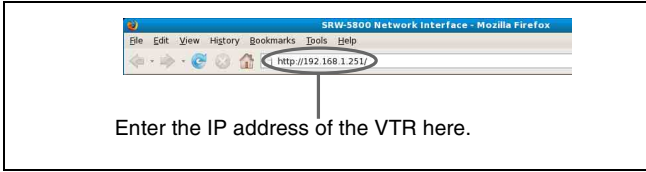
VTR Remote Mode Setup



Press to light up the NETWORK 2 button on the upper control panel of the SRW-5800.

Accessing the VTR From the Web Client

Access the VTR from the web client by entering the IP address of the VTR in the address bar of the web browser.



Notes

- Before accessing the VTR, make sure Javascript and cookies are enabled in the web browser.
- When the web application of the VTR is used, the [Return] and [Update] buttons in the browser menu do not operate. If the display of the browser cannot be updated or abnormality has occurred in the display contents, do not click the [Update] button. In this case, re-enter the IP address of the VTR.

Mounting the NFS Server From the Web Application Through the Web Browser

Perform the procedure below to mount the NFS server.

- 1 From the web client, access the VTR and display the web application. Click the DISK SETUP menu select button, and then click the DISK CONTROL tab.

The DISK CONTROL tag display appears.



- 2 Set the following items.

- TYPE:** disk sharing protocol of the NFS server
- OPTION:** NFS mount option
- SERVER ID:** IP address of the NFS server
- SERVER DIR:** path to the shared directory provided by the NFS server

Note

The OPTION column should be left blank during normal use. If, however, you want to specify the block size for files at the time of disk mounting so as to optimize transfer speeds, then enter the data as shown in the following example.

Example) wsize=32768,rszise=32768

Consult your NFS server administrator if it is necessary to set the mount option.

- 3 Press the MOUNT button to mount the NFS server.

When the server is mounted, the MOUNT button changes to the UMount button.

- 4 Set the LIST TYPE column to select how picture clips on the shared directory are displayed.

Main Only: Only main picture clips are displayed.

Main+Proxy: Both main picture clips and proxies are displayed.

Others: Shows the files other than pictures.

Note

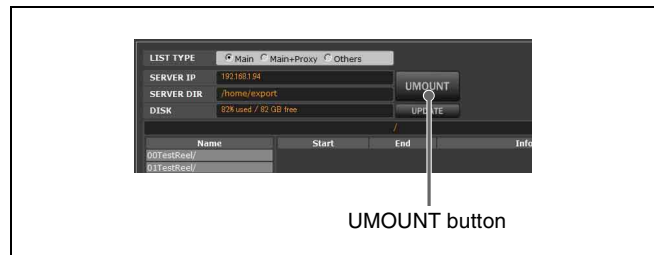
Even when “Main+Proxy” is selected, only the main picture clips are always displayed on the DISK CONTROL tag display in the EXPORT menu.

When “CIFS” is selected for TYPE in step 2 above

To access the shared directory specified in SERVER DIR, additionally set USER NAME, DOMAIN, and PASSWORD.

To unmount the NFS server

Click the UMount button on the DISK CONTROL tag display.



Note

Unmount the NFS server before turning off the VTR or before the VTR restarts after changing the VTR format settings.

About automatic changes in the VTR SETUP menu settings that occur during VTR operations conducted through the web application

Note that the settings of following items in the VTR SETUP menu of the SRW-5800 are changed automatically as indicated below when the respective VTR operations are conducted through the web application.

- Import or export of files
 - Menu item “606: TCG MODE select” changes to “regene”.
 - Menu item “607: TCG REGENE SOURCE select” changes to “int-LTC”.
- First Rec (first recording operation)
 - Menu item “601: DF/NDF MODE select” changes to “drop frame” or “non-drop frame” according to the setting on the web application.
- Any VTR operation (including import and export)

- Menu item “005: SERVO AV REFERENCE select” changes to “input”¹⁾.
- Menu item “602: TIMER MODE select” changes to “TC”.
- Menu item “A10: 9-pin TC sense select” changes to “LINE”.

1) It is recommended that you leave the “input” specification as is during use of the networking function of the HKSR-5804.

About the VTR SETUP menu setting to prevent import or export failure

During import or export, the SRW-5800 repeats “run and stop” movement. If the SRW-5800 enters standby off mode while stopped (in STILL status) during import or export, the SRW-5800 may fail to servo-lock by the time it reaches the next IN point. This will cause the import or export operation to be canceled. To prevent this, it is recommended that menu item “501: STILL TIMER” in the VTR SETUP menu of the SRW-5800 be set to eight minutes (the default setting) or longer.

If the same problem occurs due to extremely slow network speed, etc., the menu item “501: STILL TIMER” setting should be even longer to prevent the SRW-5800 from entering tape protection mode while in stop (STILL) status.

Proxy and GUI Settings

Proxy Setup

- 1 Access the VTR from the web client to display the web application, click the PROXY SETUP menu select button, and then click the PROXY SETUP tab.

The PROXY SETUP tag display appears.



- 2 Set the following items.

In the table below, the default setting is indicated by an asterisk (*).

Item	Function/settings
GUI TYPE	<p>Selects the size of the proxy and whether the jog dial appears or not in the GUI.</p> <p>Normal Proxy without JOG Dial*: The proxy is displayed with a 320-pixel width. The jog dial does not appear in the VTR CONTROL display.</p> <p>Normal Proxy with JOG Dial: The proxy is displayed with a 320-pixel width. The jog dial appears in the VTR CONTROL display.</p> <p>Large Proxy without JOG Dial: The proxy is displayed with a 640-pixel width. The jog dial does not appear in the VTR CONTROL display.</p> <p>This setting also determines the file size of the proxy that is generated automatically during export.</p> <p>Note The proxy that appears in the DISK SETUP menu is always displayed with a 320-pixel width, regardless of this setting.</p>

Item	Function/settings
GUI MODE	Selects how the items in the display are shown. Tab*: Items are divided into multiple tag displays. Flat: Items are shown in one display.
GUI EFFECT	Determines whether to apply effects such as fade in/out when switching to another display. disable*: Effects are not applied. enable: Effects are applied. Note When "enable" is selected, the response of the computer when switching to another display may become extremely slow depending on the computer in use.
FORMAT	Selects the file type of the proxy displayed on the GUI. BMP: Bitmap JPG*: JPEG Note that the file type of the proxy that is generated automatically during file export is also determined by this setting.
MODE	Selects the display mode of the proxies that appear in the GUI during tape playback. Normal*: Displays the picture. Waveform(Parade) : Displays the waveforms (red, green, and blue). Waveform(Red): Displays the waveform (red). Waveform(Green): Displays the waveform (green). Waveform(Blue): Displays the waveform (blue). Vector: Displays the vector scope. Vector(x2): Displays the vector scope at 2-fold magnification.
WF TYPE	Selects the drawing method of the waveform. Dot*: Dots Line: Lines
WF OVERLAY	Selects the display method of the waveform(s). off*: Does not display the picture. Only the waveform(s) is (are) displayed. on: Waveform(s) is (are) displayed over the picture. on(Mix):Waveform(s) and the picture are mixed and displayed.

Item	Function/settings
WF ALPHA	Specifies the waveform transparency when the waveform(s) and the picture are mixed. Low*: Low transparency Middle: Medium transparency High: High transparency
AUTO GEN	Determines whether or not proxies are automatically generated. disable: Proxies are not generated automatically. enable: When previewing files in the clip list or when exporting files, proxies are automatically generated for picture files that do not have their own proxies. enable(as Temporarily)*: Proxies are generated for display on the GUI. However, the generated proxies are not stored on the disk. Note Due to system limitations, during the export of uncompressed data, proxies are not generated for main picture files that are greater than about 62 MB.

Item	Function/settings
PROXY DIR	<p>Determines the directory where the generated proxies are stored. Same as Main Files: Proxies are stored in the same directory as the main picture files.</p> <p>Proxy Directory*: "proxy/" directory is automatically created right under the directory where the main picture files are stored. Proxies are stored in the "proxy/" directory.</p> <p>Resolution directory: When the main picture files are stored in directories labeled according to size (e.g., 1920 × 1080), a directory for storing small-size picture files (e.g., 320 × 180) is created to store proxies. When the main picture files are not stored in directories according to picture file size, proxies are stored in the same directory where their main picture files are stored.</p> <p>When importing files, a directory for storing main picture files and a directory for storing their proxies labeled according to size (e.g., 1920 × 1080, 320 × 180) are created directly under the specified directory. The main picture files and their proxies are stored in these directories.</p> <p>When importing uncompressed files, note that the "Resolution directory" setting is not applied when FILE DIR in the DISK CONTROL tag display of the IMPORT menu (<i>see page 19</i>) is set to "Org Structure" and the original picture files are not stored in the directory according to size. When FILE DIR is set to "All Files into Selected Directory," directories according to size are created.</p>

Saving and Recalling the GUI Setup Data

GUI setup data are temporarily stored in a cookie in the web browser. You can name and store the cookie on a mounted disk to recall the GUI settings.

- 1 Access the VTR from the web client to display the web application, click the PROXY SETUP menu select button, and then click the COOKIE tab.

The COOKIE tag display opens.



- 2 Enter a name for the cookie in the NAME box of the SAVE area, and then click the SAVE button.

The entered file name is automatically appended with the date.

Then, the cookie is stored in the directory for cookies on the mounted NFS server.

To recall GUI setup data

Click the NAME box of the LOAD/DELETE area, select the stored cookie, and then click the LOAD button. Selecting "Factory Preset" at this time resets the GUI settings to their default values.

To delete GUI setup data

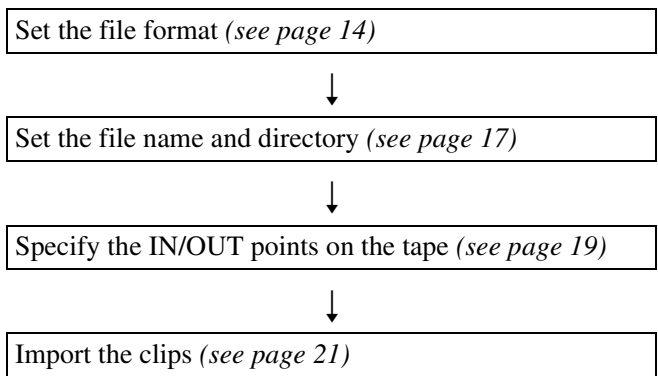
Click the NAME box of the LOAD/DELETE area, select the stored cookie, and then click the DELETE button.

Importing Files

In this section, the settings required for importing compressed data (HDCAM-SR format) are described first. Next, the additional settings required for importing uncompressed data (DATA format) are explained, as well as settings that can only be made for uncompressed data.

Overview of the Import Procedure

The following diagram gives an overview of the import procedure.



File Format Setup

For compressed data

The following procedure sets the format of files imported from the VTR to the NFS server and the picture data conversion function.

- 1 Access the VTR from the web client to display the web application, click the IMPORT menu select button, and then click the FILE SETUP tab.

The FILE SETUP tag display opens.



- 2 Set the following items.

In the table below, the default setting is indicated by an asterisk (*).

Item	Function/settings
FILE TYPE	<p>Selects the file type of the main picture files to be imported from the VTR to the NFS server.</p> <p>DPX(RGB 4:4:4)*: RGB 4:4:4 DPX DPX(YCbCr 4:2:2): YCbCr 4:2:2 DPX CIN: CIN (Cineon) TIFF: TIFF MXF(SR-SQ): MXF SR-SQ (normal MPEG4 SStP HDCAM-SR compression) MXF(SR-Lite): MXF SR-Lite (as twice highly compressed as normal mode) None (proxy only): Main picture files are not imported. Only proxies of the picture files are imported.</p> <p>Note Additional settings are required when "MXF(SR-SQ)" or "MXF(SR-Lite)" is selected as the file type.</p> <p><i>For details, see "Settings required when "MXF(SR-SQ)" or "MXF(SR-Lite)" is selected as the file type" on page 16.</i></p>

Item	Function/settings
DEPTH (for DPX, CIN, or TIFF files)	<p>Specifies the bit depth of the main picture files to be imported. 8: 8 bits 10(DPX/CIN Only)*: 10 bits 16: 16 bits</p> <p>Note Video data is recorded on the tape using 10 bits. Therefore, when the bit depth of a main picture file is set to 8 bits, the lower 2 bits of the video data are dropped. Normally, when the bit depth is set to 16 bits, only the upper 10 bits of the video data are effective. However, if a lookup table (LUT) is used to convert the 10-bit depth of the input signal to 12- or 16-bit depth for output, the upper 12 bits become effective.</p>
IMAGE SIZE	Shows the size of the main picture files.
RANGE (for DPX, CIN, or TIFF files)	<p>Specifies how the signal level is converted for the main picture files to be imported.</p> <p>Head → Full: During import, the effective video signal range (64-940) of video signals with headroom is extended to full range (0-1023).</p> <p>Head → Head: Video signals with headroom are imported as is.</p> <p>Full → Full*: Full-range (0-1023) picture data are imported as is.</p>
LUT (for DPX, CIN, or TIFF files)	<p>Selects the lookup table to be applied to imported main picture data.</p> <p>off*: No lookup table is applied.</p> <p>BANK1 to BANK8: Select lookup table bank 1 to 8.</p> <p>By using the LUT tag display of the VTR SETUP menu, it is possible to store the lookup tables in the respective lookup table banks. Stored lookup tables are maintained even after the VTR is turned off.</p>
FLIP (for DPX, CIN, or TIFF files)	<p>Specifies how main picture files are to be flipped during import.</p> <p>H FLIP: Main picture files are flipped horizontally.</p> <p>V FLIP: Main picture files are flipped vertically.</p>
TRANSFER (for DPX files)	<p>From the options below, select the information to be recorded to the TRANSFER field of the header of imported DPX files.</p> <p>User Defined, Printing density, Linear*, Logarithmic, Unspecified Video, SMPTE 274M, ITU-R 709-4</p>

Item	Function/settings
COLOR (for DPX or CIN files)	<p>Selects the information to be recorded to the COLORIMETRIC field of the header of imported DPX files or the Channel 1 designator field of the header of imported CIN files.</p> <p>For DPX files: User Defined, Printing Density, Unspecified Video, SMPTE 274M* or ITU-R 709-4</p> <p>For CIN files: Printing Density or CCIR-X/11 (Rec709)*</p>
METADATA (for DPX or CIN files)	<p>Specifies how the ANC metadata stored on the tape is inserted into the DPX/CIN files.</p> <p>Off*: Does not insert the ANC metadata into the DPX/CIN files.</p> <p>All Data: The ANC metadata is inserted into the user-defined data area in the DPX/CIN files. The Keycode contained in the ANC metadata is inserted into the Industry/Motion-picture film information header of the DPX/CIN files.</p> <p>Keycode Only: The Keycode contained in the ANC metadata is inserted into the Industry/Motion-picture film information header of the DPX/CIN files.</p> <p>Notes</p> <ul style="list-style-type: none"> In order to insert the ANC metadata into the DPX/CIN files, the actual line number at the point where the metadata is actually inserted on the tape must be specified by using HDCAM-SR METADATA LINE SELECT within the MAINTENANCE menu on the VTR. <p><i>For details on the MAINTENANCE menu of the VTR, refer to the Installation Manual supplied with the SRW-5800.</i></p> <ul style="list-style-type: none"> The Keycode contained in the ANC metadata is effective only when it conforms to the format specified by SMPTE RP215.

Item	Function/settings
REEL NAME (on the first field) (for DPX or CIN files)	Selects the information to be recorded to the INPUT DEVICE NAME field or CREATOR field of the header of imported DPX files or the Input Device field of the header of imported CIN files. Auto*: The cassette ID in the Tele-File or the reel number of the EDL is recorded. Manual: Enter the reel name to the second field manually. Cassette ID: The cassette ID in the Tele-File is recorded.
REEL NAME (on the third field) (for DPX or CIN files)	Selects the field to which the information selected by "REEL NAME (in the first field)" is recorded. (For DPX files only. For CIN files, this selection has no effect and the selected information is always recorded to the Input Device field.) CREATOR field: The information is recorded to the CREATOR field. INPUT DEVICE NAME field*: The information is recorded to the INPUT DEVICE NAME field. TV Reserved Field: The information is recorded to the TV reserved field.
PROXY TYPE (for DPX, CIN, TIFF, or MXF files)	Selects the file type of imported proxies. BMP: Bitmap JPG*: JPEG None: Proxies are not imported. Temporary: Proxies are imported for display in the GUI. Imported proxies, however, are not stored on the disk. Note In consideration of transfer speed, selecting "BMP" than "JPG" is recommended for importing MXF files.
PROXY SIZE (for DPX, CIN, TIFF, or MXF files)	Selects the size of imported proxies. Width:640: 640 pixels in width Width:320*: 320 pixels in width Width:160: 160 pixels in width Note Due to system limitations, proxies are not imported for main picture files that are greater than about 62 MB.

Settings required when "MXF(SR-SQ)" or "MXF(SR-Lite)" is selected as the file type

Notes

- In order to use the MXF files with the HKSR-5804, the VTR must be SRW-5800/2 or later.
- When "NFSv2" is selected for the TYPE column in step 2 in "Mounting the NFS Server From the Web Application Through the Web Browser" on page 10, an MXF file of 2 GB or greater cannot be created.

The FILE SETUP tag display is shown below.



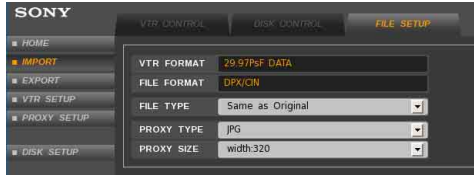
Set the following items.

In the table below, the default setting is indicated by an asterisk (*).

Item	Function/settings
AUDIO	Specifies the number of audio channels to be added to the MXF files. 0CH: No audio channel is added. 2CH: Channel 1 and 2 4CH: Channel 1 to 4 6CH: Channel 1 to 6 8CH: Channel 1 to 8 10CH: Channel 1 to 10 12CH: Channel 1 to 12 AUTO*: When the tape format is HDCAM-SR, channel 1 to 12 are added. When the tape format is HDCAM, channel 1 to 4 are added.
METADATA	Selects whether or not to add ANC metadata to the MXF files. OFF*: ANC metadata is not added. ON: ANC metadata is added.
TC	Specifies the type of timecode to be written to the header of the MXF files. LTC*: LTC VITC: VITC Recount: The value counted from the IN point timecode is written.

For uncompressed data

The FILE SETUP tag display is shown below.



For uncompressed data, the following three items must be specified.

In the table below, the default setting is indicated by an asterisk (*).

Item	Function/settings
FILE TYPE	<p>Selects the file type of main picture files to be imported from the VTR to the NFS server.</p> <p>Same as original*: Files of the same type as the original files on the tape are imported.</p> <p>None (Proxy only): Main picture files are not imported. Only proxies of picture files are created.</p>
PROXY TYPE	<p>Selects the file type of proxies to be created.</p> <p>Selectable settings are the same as “PROXY TYPE” in “For compressed data” section (see page 16).</p>
PROXY SIZE	<p>Selects the size of proxies to be created.</p> <p>Selectable settings are the same as “PROXY SIZE” in “For compressed data” section (see page 16).</p> <p>Width:160: 160 pixels in width</p> <p>Note Due to system limitations, during the import of uncompressed data, proxies are not generated for main picture files that are greater than about 62 MB.</p>

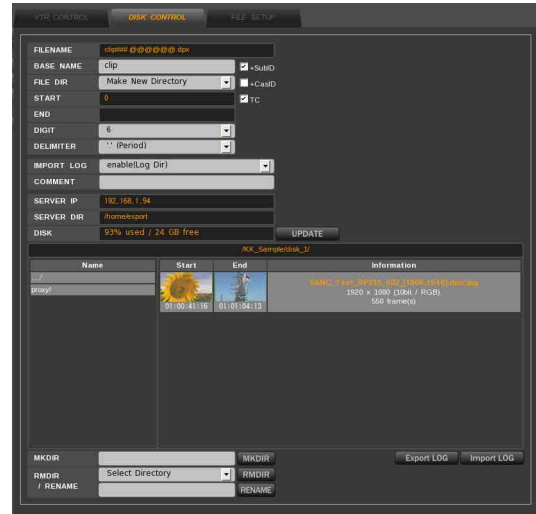
File Name and Directory Setup

For compressed data

This section explains the settings for file names of main picture files imported from the VTR to the NFS server and how to specify the directory (target directory) on the NFS server where imported files are stored.

- 1 Access the VTR from the web client to display the web application, click the IMPORT menu select button, and then click the DISK CONTROL tab.

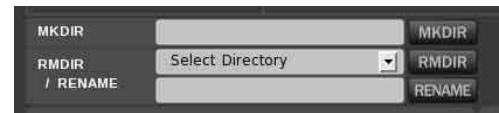
The DISK CONTROL tag display opens.



- 2 Specify the directory where imported files are to be stored.

The directory that is currently open is specified as the target directory.

You can use the lower part of the DISK CONTROL tag display to create or delete a directory. A directory name can also be changed with this display.



To create a directory

Enter the directory name in the MKDIR box, and then click the MKDIR button. A new directory is created right under the directory whose name is currently displayed in the center of the display.

By entering certain character strings, corresponding information is automatically obtained from the system and entered as a new directory name.

The character strings and information obtained are as follows:

- <casid>: cassette ID
- <date>: date (year, month, day)
- <time>: time (hour, minute, second)

The following is an example of the directory name when the cassette ID is “0123456789” and “test<casid>_<date><time>” is entered at 17:42:35 on February 16, 2009.
test0123456789_20090216174235/

To change a directory name

Click the Select Directory box and select the directory whose name you want to change. Then enter the new name in the RMDIR/RENAME box and click the RENAME button.

To delete a directory

Click the Select Directory box and select the directory that you want to delete. Then click the RMDIR button.

3 Set the following items.

In the table below, the default setting is indicated by an asterisk (*).

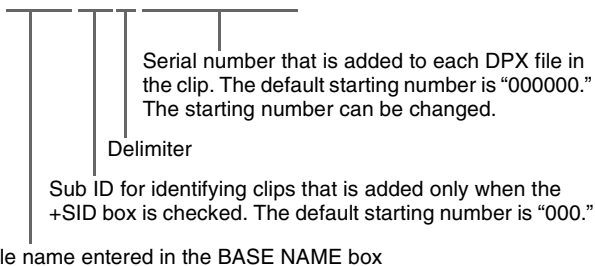
Item	Function/settings
BASE NAME	Sets the base name of imported files. <i>For details on how files are named, see "Example of file name" on page 18.</i>
+SubID check box	When checked, a sub ID is added to the picture file name and directory name to identify the clips. The sub ID is incremented by 1 each time importing is carried out. Note You should check this box when multiple clips of the same name are imported to the same directory.
FILE DIR	Sets the directory where imported picture files are stored. Use Selected Directory: Imported picture files are stored right under the directory whose name is currently displayed at the center of the display. Make New Directory*: A new directory is created directly under the specified directory each time files are imported. Imported picture files are stored in the created directory. <i>For details on how the created directories are named, see "Example of directory name" on page 19.</i>
+CasID check box	When checked, a directory with the same name as the cassette ID is created when picture files are imported. The imported picture files are stored in the created directory.
START	Sets the starting serial number of the file name (@ @ @ @ @ @). Note A number exceeding 2147483647 (0x7fffffff) cannot be specified.
END	Shows the highest (last) serial number of the file name.

Item	Function/settings
TC check box	When checked, the value of the IN point timecode converted into frame count is set as the starting serial number (@ @ @ @ @ @) of the file name. For example, when the timecode of the IN point is "01:00:00:00" at 24 PsF, the starting serial number is "86400."
DIGIT	Specifies the number of digits of the serial number of the file name (@ @ @ @ @ @). The default setting is six digits. When the serial number of an imported file exceeds six digits, the number of digits is automatically increased.
DELIMITER	Specifies the delimiter to be used between the file name specified in BASE NAME and the serial number (@ @ @ @ @ @). "_" (underbar)*, "." (period), or "-" (minus) can be selected.
IMPORT LOG	Specifies whether or not an import log file is created and where the created file is stored. Disable: An import log file is not created. Enable(Log Dir): The import log file is stored in the directory for log storage. Enable(Selected Dir): The import log file is stored right under the specified directory. To view the created import log file, click the Import LOG button at the lower right of the DISK CONTROL tag display. <i>For details on the import log file, see "Import log display" on page 22.</i> <i>For details on how to manage the import log file, see "Log File Management" on page 36.</i>
COMMENT	Enter comments here to be written to the import log file.

Example of file name

The following example shows a file name for which "clip_" has been entered in the BASE NAME box of the DISK CONTROL tag display.

clip_###_@@@@@.dpx

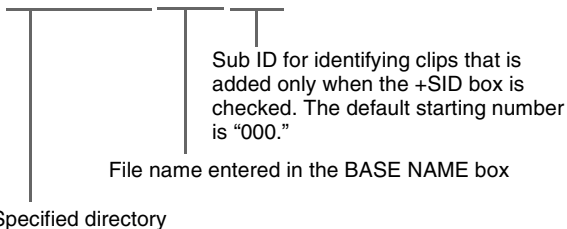


Example of directory name

When “Make New Directories” is selected for the FILE DIR box in the DISK CONTROL tag display, a new directory is created right under the specified directory each time a clip is imported.

The following example shows a directory name for which “clip_” has been entered in the BASE NAME box of the DISK CONTROL tag display.

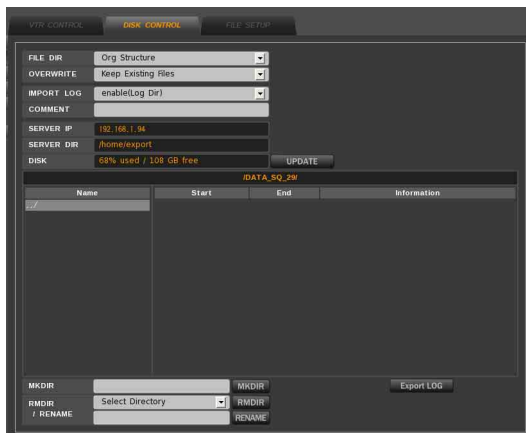
XXXXXXXX/clip_###/



For uncompressed data

The following table explains the additional settings made for the directory where main picture files that are imported from the VTR to the NFS server are stored (target directory).

The DISK CONTROL tag display is shown below.



For uncompressed data, the only items that must be specified are the four items in the table below and the

target directory (step 2 in “File Name and Directory Setup” on page 17).

In the table below, the default setting is indicated by an asterisk (*).

Item	Function/settings
FILE DIR	Specifies the directory where imported picture files are stored. Org Structure*: Imported picture files are stored in the same directory as the original files. Org Structure (Under Selected Dir): A directory with the same structure as that of the original files is created directly under the specified directory. Picture files are stored in the created directory. All Files into Selected Directory: Picture files are stored right under the selected directory.
OVERWRITE	Specifies the action to be taken when the same file name already exists in the directory where the file is imported. Keep Existing File*: The existing file is not overwritten. (The imported file is not saved with a different name.) Overwrite Existing File: The existing file is overwritten.
IMPORT LOG	Specifies whether or not an import log file is created and where the created log file is stored. The settings are the same as those when importing compressed data (see page 18).
COMMENT	Enter comments here to be written to the import log file.

Setting IN/OUT Points on a Tape

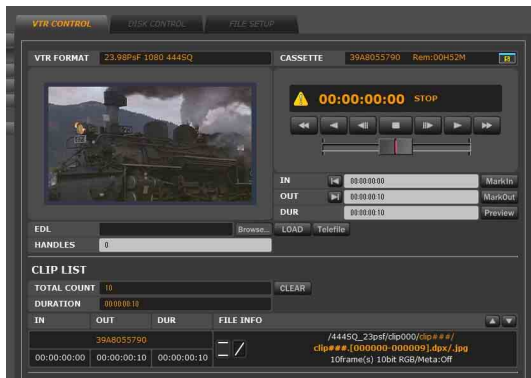
For compressed data

This section explains how to import files from a tape loaded into the VTR. There are two ways to import files from the tape: by specifying the section to be imported while the tape is playing and by loading an EDL.

Specifying IN/OUT points while playing the tape

- 1 Access the VTR from the web client to display the web application, click the IMPORT menu select button, and then click the VTR CONTROL tab.

The VTR CONTROL tag display opens.



2 Determine the section on tape to be imported.

There are four ways to determine the section to be imported.

- While playing the tape and monitoring the proxies on the left side of the display or the monitor connected to the VTR, click the MarkIn button at the point that you want to specify as the IN point. Then, click the MarkOut button at the point that you want to specify as the OUT point.
- Enter the IN point timecode in the IN box, and enter the OUT point timecode in the OUT box.
- Enter the IN point timecode in the IN box, and enter the duration of the section to be imported in the DUR box.
- Click the MarkIn button in the IN box at the point you want to specify as the IN point. Then enter the duration of the section to be imported in the DUR box.

To enter timecode in drop frame mode

Enter a comma “,” or a semi-colon “;” as the delimiter between the seconds and the frames, instead of a colon “:”.

Specifying IN/OUT points by loading an EDL

The section to be imported can be specified by loading an EDL created using an external editor.

Click the Browse... button at the right of the EDL box in the VTR CONTROL tag display and specify the EDL that is stored on a disk of the web client or external media, and then click the LOAD button.

The EDL formats that can be loaded are CMX, GVG, and BVE-9000/9100.

To put handles to the IN/OUT point positions by frame

Enter the value (frames) in the HANDLES box. According to the entered value, the IN point shifts in the reverse direction and the OUT points shifts in the forward direction compared to the original positions of the IN/OUT points in the EDL.

Loading a clip sequence from the export log display

For details, see “To load a clip sequence from the export log display” on page 28.

Loading a clip sequence from Tele-File

By selecting the clip from the clip list stored in the Tele-File label on the cassette tape, the clip sequence can be loaded directly to the clip list.

Click the Tele-File button at the right of the EDL box in the VTR CONTROL tag display to open the CASSETTE tag display, and select the clip to be loaded from the clip list stored to the Tele-File label on the cassette tape. Then, select “Direct to Import List” for the FILE TYPE box, and then, click the SAVE button.

For details see “Outputting Tele-File Information” on page 34.

Checking the clip list and transposing clips

After specifying the IN/OUT points, double-click the proxy to register the section between the IN and OUT points in the clip list. Registered clips can be viewed in the CLIP LIST area of the VTR CONTROL tag display. Registered clips can be transposed through drag-and-drop operations.

When multiple clips are registered, importing starts from the top of the list and continues to the bottom of the list.

To clear the contents of the clip list

Click the CLEAR button in the CLIP LIST area of the VTR CONTROL tag display.

To remove a specific clip

Double-click the clip.

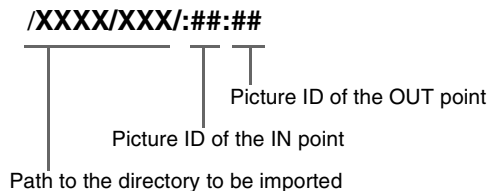
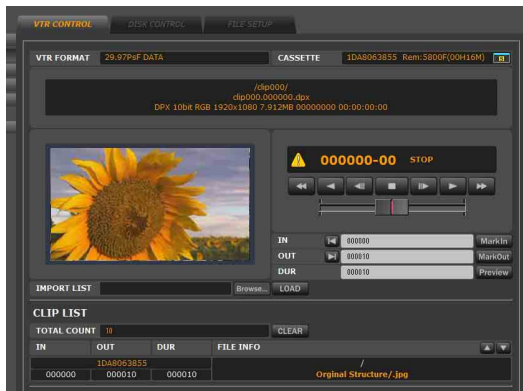
To leave out the clips with the same reel name

While holding down the Shift key and the Ctrl key (or the Alt key) on the keyboard, double-click one of the registered clips. The clips with the same reel name remain and all other clips are deleted.

The reel name is indicated above the IN/OUT/DUR boxes in the CLIP LIST area.

For uncompressed data

The VTR CONTROL tag display opens as shown below.



Specifying IN/OUT points while playing the tape

The procedure is the same as “*Specifying IN/OUT points while playing the tape*” on page 19 in “*Setting IN/OUT Points on a Tape*”.

However, instead of using timecode, picture ID is used to specify the IN/OUT points for uncompressed data.

A picture ID consists of six digits in the first part and two digits in the last part.

The first six digits indicate the serial number of the picture data. The last two digits indicate the serial number of the frame (portion) that consists of a picture (picture data). (Portions are counted in units of frames of those in the HD pictures compressed in the HDCAM-SR format.)

For example, uncompressed HD data is equal to five HD picture frames compressed in the HDCAM-SR format.

Therefore, the last two digits of the picture ID would be 00 to 04.

Loading a clip sequence from the export log display

For details, see “*To load a clip sequence from the export log display*” on page 28.

Specifying IN/OUT points and picture files storage location by loading an import list

You can specify the sections to be imported and the directory where the imported files are to be stored by loading an import list created using an external editor. Click the Browse... button to the right of the IMPORT LIST box in the VTR CONTROL tag display and specify the import list file stored on the disk of the web client or external media, and then click the LOAD button.

The following example shows the contents of an import list file.

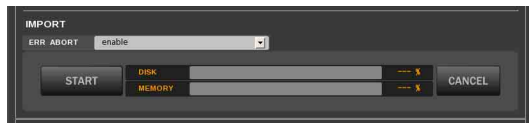
Checking the clip list and transposing clips

The procedure is the same as “*Checking the clip list and transposing clips*” on page 20 in “*Setting IN/OUT Points on a Tape*.”

Importing the Clips

The importing procedure is the same for both compressed data and uncompressed data.

Click the START button in the IMPORT area of the VTR CONTROL tag display to import clips in the clip list.



While picture files are being imported, the transfer progress is shown as a progress bar and in percentage figure in the DISK box.

Also, the MEMORY box shows the frame buffer memory status on the VTR.

To cancel importing the clips

Click the CANCEL button.

Settings related to error occurrences

You can set what kind of action is taken when an error occurs during importing.

In the table below, the default setting is indicated by an asterisk (*).

Item	Function/settings
ERR ABORT	Specifies whether or not to abort the import when an error occurs. enable*: Importing is aborted. disable: Importing continues as long as possible. <i>For details on error messages that appear during importing, see “Error messages” on page 21.</i>

Error messages

The table below lists the error messages that are displayed on the VTR during importing and their meanings.

When one of these messages appears with ERR ABORT set to “enable,” importing is aborted.

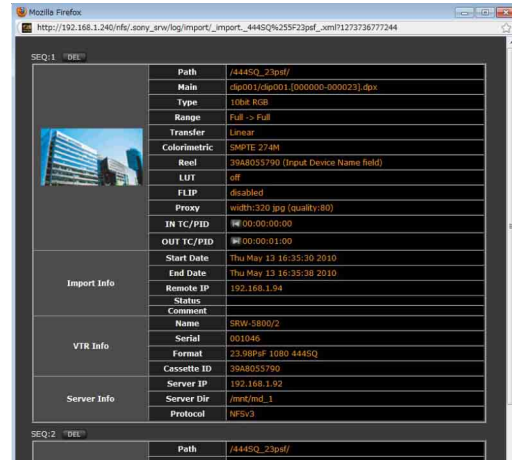
Note

When ERR ABORT is set to “disable,” importing continues as long as possible even after an error message appears. Note, however, that normal operational results may not be guaranteed. It is recommended that ERR ABORT be set to “enable” during normal use.

Message	Meaning
CH COND RED	The playback error rate of the tape is high and the channel condition has turned to red.
LOST LOCK	The servo has become unlocked during the playing of the tape.
TAPE END	The end of the tape has been detected.
PB FORMAT MISMATCH	The tape format does not match the system setting.
DF/NDF MISMATCH	The drop frame/non-drop frame setting of the tape does not match the system setting.
CANNOT SV LOCK	The servo cannot be locked during the playing of the tape.
SYSTEM PORTION MISMATCH	During the import of uncompressed data, an unexpected discontinuity of portion numbers has been detected. (This appears during the import of uncompressed data only).
UNEXPECTED VTR MODE	During importing, the VTR has entered an unexpected operation mode (e.g., playback was stopped from the control panel of the VTR).
VTR is LOCAL	The remote mode of the VTR is not set to “NETWORK 2” at the start of importing. (When this message appears, clips are not imported.)

Import log display

Click the Import LOG button in the DISK CONTROL tag display to open the import log display. You can view the log for each import (sequence).



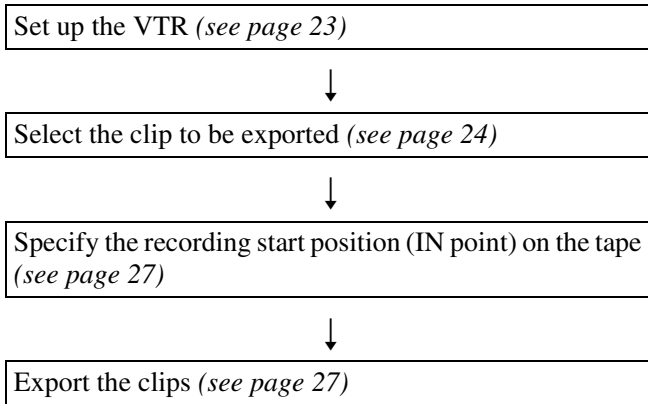
To clear the contents of the import log display
 Each sequence in the import log display can be cleared. Click the DEL button at the beginning of the sequence indication whose contents you want to clear.

Exporting Files

In this section, the settings required for exporting compressed data (HDCAM-SR format) are described first. Next, the additional settings required for exporting uncompressed data (DATA format) are explained, as well as settings that can only be made for uncompressed data.

Overview of the Export Procedure

The following diagram gives an overview of the export procedure.



VTR Setup

For compressed data

This procedure carries out the signal processing settings (picture conversion function) for main picture files exported from the NFS server to the VTR.

- 1 Access the VTR from the web client to display the web application, click the EXPORT menu select button, and then click the VTR SETUP tab.

The VTR SETUP tag display appears.



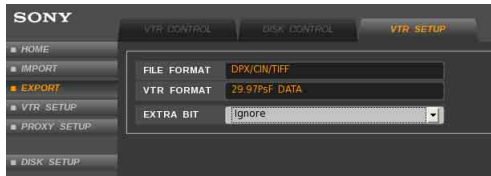
- 2 Set the following items.

In the table below, the default setting is indicated by an asterisk (*).

Item	Function/settings
RANGE	Specifies how the signal level is converted for the main picture files to be exported. Full → Head: During export, full-range video (0-1023) is compressed to the effective video signal range (64-940) of video signals with headroom. Head → Head: Video signals with headroom are exported as is. Full → Full*: Full-range (0-1023) picture data are exported as is.
LUT	Selects the lookup table to be applied to exported main picture data. off*: No lookup table is applied. BANK1 to BANK8: Select lookup table bank 1 to 8. By using the LUT tag display of the VTR SETUP menu, it is possible to store the lookup tables in the respective banks. Stored lookup tables are maintained even after the VTR is turned off.
DC	Selects the down converter setting to be applied when down-converting the picture files larger than HD format (e.g., 4K/2K picture files) into HD format for recording. Auto*: A down converter is automatically set for each main picture file to be exported so that the entire picture fits exactly within the picture aspect of the HD image. preset1 to preset8: Preset settings 1 to 8 can be selected. The selected preset settings are the downconverter settings made in the DC SETUP tag display in the VTR SETUP menu.
FLIP	Specifies how main picture files are flipped when exported. H FLIP: Main picture files are flipped horizontally. V FLIP: Main picture files are flipped vertically. Note Main picture files are sent to the down converter after they are flipped.
METADATA	Specifies how the ANC metadata stored on the user-defined data area of the DPX/CIN files are recorded to the tape. Off*: Does not record the ANC metadata to the tape. VTR Line: The ANC metadata is recorded to the tape. Recording signal line is determined by the VTR setting.

For uncompressed data

The VTR SETUP tag display is as shown below.



For uncompressed data, DPX/CIN files in the NFS server are recorded basically as is from the file name to the header.

Set the following item. In the table below, the default setting is indicated by an asterisk (*).

Item	Function/settings
+EXTRA BIT	<p>Specifies whether the two extra bits of the 32 bits allocated to each pixel of a 10-bit DPX file (10 bits being allocated to R, G, and B each) are recorded or not.</p> <p>Ignore*: The two extra bits are not recorded.</p> <p>Keep: The two extra bits are recorded.</p> <p>Note Normally, the two extra bits are not used. To use the tape efficiently, select "Ignore".</p>

Selecting the Clip To Be Exported

For compressed data

Clip selection

- 1 Access the VTR from the web client to display the web application, click the EXPORT menu select button, and then click the DISK CONTROL tab.

The DISK CONTROL tag display opens.



- 2 Set the following items.

In the table below, the default setting is indicated by an asterisk (*).

Item	Function/settings
IN TC(insert)	<p>Specifies how the recording start position (IN point) on the tape is determined.</p> <p>Preset*: In the VTR CONTROL tag display in the EXPORT menu, use the MarkIn button or enter the timecode to specify the IN point.</p> <p>File Name: Acquires the timecode of the IN point from the file name of the clip. <i>For details, see "About the "File Number" setting and "File Header" setting in the IN TC (insert) box" on page 24.</i></p> <p>File Header: Acquires the timecode of the IN point from the header of the DPX file. <i>For details, see "About the "File Number" setting and "File Header" setting in the IN TC (insert) box" on page 24.</i></p>
EXPORT LOG	<p>Specifies whether or not an export log file is created.</p> <p>disable: An export log file is not created.</p> <p>enable(Log Dir)*: The export log file is created and stored in the directory for log storage.</p> <p>To view a created export log file, click the Export LOG button at the lower right of the DISK CONTROL tag display. <i>For details on the export log file, see "Export log display" on page 28.</i></p> <p><i>For details on how to manage the export log file, see "Log File Management" on page 36.</i></p>
LOG PROXY	<p>Specifies the thumbnails used with the export log file.</p> <p>Link to Original File: The original proxy is used as the thumbnail.</p> <p>Copy to Log Directory*: The proxy is copied to the directory for log storage. <i>For details, see "About the "Copy to Log Directory" setting in LOG PROXY" on page 25.</i></p>
COMMENT	<p>Enter a comment to be written to the export log file.</p>

About the "File Number" setting and "File Header" setting in the IN TC (insert) box

When the TC checkbox for file name and directory setup (*see page 18*) is checked, the serial number of the file is obtained by converting the timecode of the tape into frames. To return the imported file to its original position on the tape after processing (e.g., after dirt and scratch removal), set the IN TC (insert) box to "File

Number.” Then, the serial number of the file name determines the export IN point to allow the file to be recorded back to its original position on the tape.

When a DPX file is imported, timecode information is stored in the header of the file.

Therefore, when the IN TC (insert) box is set to “File Header,” this timecode information determines the export IN point, regardless of the serial number of the file. As a result, the file is recorded back to its original position on the tape.

Note

If the frame rate or DF/NDF setting of the VTR is changed between import and export, exporting the file to its original position will no longer be possible.

About the “Copy to Log Directory” setting in LOG PROXY

To use the export log file as a clip list for confirming the contents of the cassette tapes, all recording information regarding the tape must be written to the one export log file.

When the following two conditions are satisfied, this can be achieved:

- The EXPORT LOG box has been set to “enable(Log Dir)” for all the export executed.
- All export operations have been executed with the same server.

The export log file is stored on the server which is used for the export. When the multiple export operations are executed to one tape from multiple servers, the whole log will not be included in the single export log file.

To avoid this situation, provide a copy of the export log file containing information about all clip files recorded on the tape along with that tape. The export log file can then be placed in the directory for storing log files on the server of the new system.

In this way, the information about clips exported from the new system can be added to the export information from the previous server.

Also, if you provide an XML-format export log file in company with a thumbnail directory (created by selecting “Copy to Log Directory” in LOG PROXY box), it will be possible to display the thumbnails of all the clip files in the new system.

For details on how to copy an export log file to external removable media, see “Log File Management” on page 36.

- 3** Move to the directory where the clip to be exported is stored, and select the clip.

For details on clip file names, see “Example of file name” on page 18.

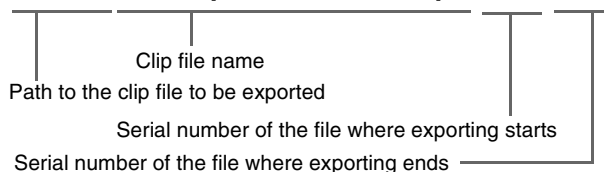
To specify the clips to be exported by loading an export list

You can specify the clip files to be exported by loading an export list created using an external editor.

Click the Browse... button to the right of the EXPORT LIST box in the DISK CONTROL tag display (see the display illustration on page 26) and specify the export list file stored on the disk of the web client or external media, and then click the LOAD button.

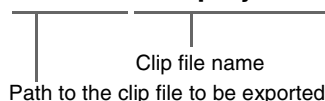
The following example shows the contents of an export list file.

`/XXX/XX/test_clip01_@@@.dpx:####:####`



Describe as shown below when exporting single file other than picture.

`/XXX/XX/test_project.xml:0:0`



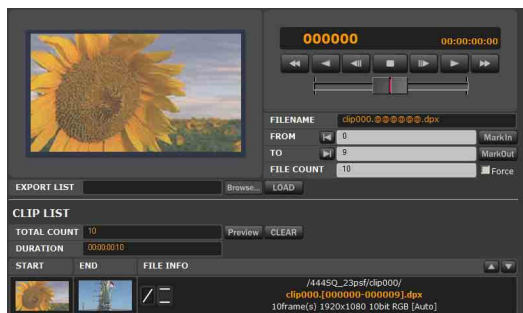
- 4** Specify the section in the selected clip to be exported.

There are four ways to determine the section to be exported.

- While playing the clip and monitoring the proxy on the left side of the display, click the MarkIn button at the point that you want to specify as the start point. Then, click the MarkOut button at the point that you want to specify as the end point.
- Enter the serial number of the file that you want to specify as the start point in the FROM box, and enter the serial number of the file that you want to specify as the end point in the TO box.
- Enter the serial number of the file that you want to specify as the start point in the FROM box, and enter the number of files that you want to include in the section to be exported in the FILE COUNT box.
- Click the MarkIn button at the point that you want to specify as the start point. Then, enter the number of files that you want to include in the section to be exported in the FILE COUNT box.

If you check the Force box, you can enter a number in the FILE COUNT box that is greater than the number of files currently in the selected directory. This is convenient when all the files to be exported have not yet arrived in the selected directory because they are still being transferred from the scanner or rendered.

Normally, when no files are in the selected directory, the export of clip files cannot be started. Note, however, that in this case, exporting can be done through automatic execution using a job file (*see page 38*).



Checking the clip list and transposing clips

After specifying the FROM/TO points, double-click the proxy to register the section between the FROM and TO points in the clip list. Registered clips can be viewed in the CLIP LIST area of the DISK CONTROL tag display. Registered clips can be transposed through drag-and-drop operations.

When multiple clips are registered, exporting starts from the top of the list and continues to the bottom of the list.

To preview the selected clip

Click the Preview button in the CLIP LIST area to preview a clip. The downconverter preset setting that is applied to main picture files (*see page 31*) is applied to the preview picture.

When multiple clips are registered to the clip list, you can preview the previous and next clips in the list by clicking the ◀||/||▶ buttons while holding down the Shift key on the keyboard.

In preview mode, a clip cannot be added to the clip list by double-clicking the proxy. Preview mode is canceled when you re-select another clip.

To clear the contents of clip list

Click the CLEAR button in the CLIP LIST area of the DISK CONTROL tag display.

To remove a specific clip, double-click the clip.

For uncompressed data

Clip selection

The DISK CONTROL tag display opens as shown below.



- 1 Set the following items in the DISK CONTROL tag display.

Item	Function/settings
EXPORT LOG	Specifies whether or not an export log file is created. The settings for this parameter are the same as those for exporting compressed data (<i>see page 24</i>). To view created export log files, click the Export LOG button in the lower right of the DISK CONTROL tag display. <i>For details on export log files, see "Export log display" on page 28.</i> <i>For details on how to manage export log files, see "Log File Management" on page 36.</i>
LOG PROXY	These settings are for the thumbnails used with the export log file. The settings for this parameter are the same as those for exporting compressed data (<i>see page 24</i>). <i>For details on the "Copy to Log Directory" setting, see "About the "Copy to Log Directory" setting in LOG PROXY" on page 25.</i>
COMMENT	Enter a comment to be written to the export log file.
LIST TYPE	Specifies the type of the files to be displayed. Main*: Picture files (DPX, CIN, TIFF, and MXF) Others: Files other than pictures

Note

Uncompressed DATA 29PsF and uncompressed DATA 25PsF are different formats. For this reason, if the frame rate setting of the VTR as of export and as of import differs, the files cannot be imported.

- 2 Do steps 3 and 4 of "Clip selection" on page 24 in "Selecting the Clip To Be Exported."

Checking the clip list and transposing clips

The procedure is the same as "Checking the clip list and transposing clips" on page 26 in "Selecting the Clip To

Be Exported.”

For uncompressed data, the DURATION box in the CLIP LIST area shows the timecode of the HDCAM-SR format compressed data, so that the amount of tape used can be easily checked.

Specifying the Recording Start Position (IN Point) on the Tape

For compressed data

Specifying the IN point while playing the tape

- 1 Access the VTR from the web client to display the web application, click the EXPORT menu select button, and then click the VTR CONTROL tab.

The VTR CONTROL tag display appears.



- 2 While playing the tape and monitoring the proxies on the left of the display or the monitor connected to the VTR, click the MarkIn button at the point that you want to specify as the IN point.

You can also specify the IN point by entering the IN point timecode directly to the IN box.

To enter timecode in drop frame mode

Enter a comma “,” or a semi-colon “;” as the delimiter between the seconds and the frames, instead of a colon “:”.

For uncompressed data

Specifying the IN point while playing the tape

The procedure is the same as “*Specifying the IN point while playing the tape*” on page 27 in “*Specifying the Recording Start Position (IN Point) on the Tape.*” Note, however, that picture ID is used instead of timecode.

For details on picture ID, see “Specifying IN/OUT points while playing the tape” on page 19 in “Setting IN/OUT Points on a Tape.”

Exporting the Clips

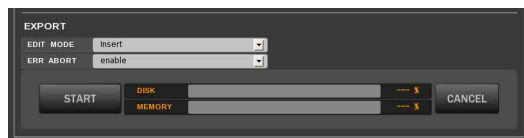
The export procedure is the same for both compressed data and uncompressed data.

- 1 Set the following items in the EXPORT area of the VTR CONTROL tag display.

In the table below, the default setting is indicated by an asterisk (*).

Item	Function/settings
EDIT MODE	Specifies the edit mode to be used when recording a file transferred through a network connection to tape. Insert*: The clips are recorded by insert editing. This requires the tape to have a previously established base recording. Assemble: The clips are recorded by assemble editing. This requires that the tape have a base recording of at least a few seconds before the IN point. First Rec: Several seconds of leader signal is recorded (selectable from Black, 100% Color Bar, or SMPTE Color Bar), followed by recording in assemble editing mode.
ERR ABORT	Specifies whether or not to abort an export when an error occurs. enable*: Exporting is aborted. disable: Exporting continues as long as possible. <i>For details on error messages that appear during exporting, see “Error messages” on page 28.</i>

- 2 Click the START button to export the clips in the clip list.



While picture files are being exported, the transfer progress is shown as a progress bar and in percentage figure in the DISK box.

Also, the MEMORY box shows the frame buffer memory status on the VTR.

To cancel exporting the clips

Click the CANCEL button.

When “Assemble” or “First Rec” is selected for EDIT MODE, clicking the CANCEL button once stops exporting after the data in the frame buffer memory is

recorded to the tape. Clicking the button twice terminates exporting instantly.

When “Insert” is set for EDIT MODE, clicking the CANCEL button once terminates exporting instantly.

Error messages

The table below lists the error messages that are displayed on the VTR during exporting and their meanings.

When one of the messages appears and ERR ABORT is set to “enable,” exporting is aborted.

Note

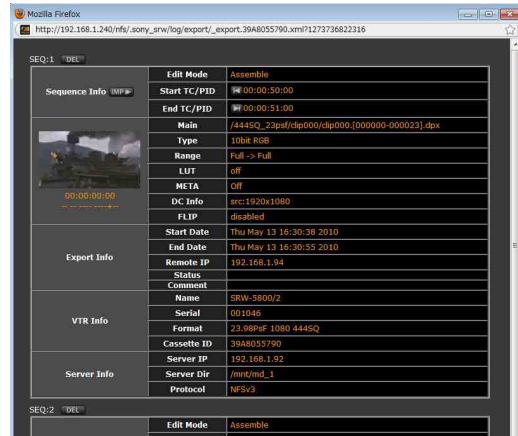
When ERR ABORT is set to “disable,” exporting continues as long as possible even after an error message appears. Note, however, that normal operational results may not be guaranteed. It is recommended that ERR ABORT be set to “enable” during normal use.

Message	Meaning
CH COND RED	The recording error rate of the tape is high and the channel condition has turned to red.
LOST LOCK	The servo has become unlocked during recording.
TAPE END	The end of the tape has been detected.
PB FORMAT MISMATCH	The tape format does not match the system setting.
DF/NDF MISMATCH	The drop frame/non-drop frame setting of the tape does not match the system setting.
REC INHI	Recording is inhibited on the VTR or the cassette is record-protected.
CANNOT SV LOCK	The servo cannot be locked to the IN point.
PB PORTION MISMATCH	During insert editing of uncompressed data, the number of the portions to be recorded and the number of the portions on the base recording do not match. (This appears during the export of uncompressed data only.)
UNEXPECTED VTR MODE	During exporting, the VTR has entered an unexpected operation mode (e.g., playback was stopped from the control panel of the VTR.).
VTR is LOCAL	The remote mode of the VTR is not set to “NETWORK 2” at the start of exporting. (When this message appears, exporting will not take place.)

Export log display

Click the Export LOG button in the DISK CONTROL tag display to open the export log display. You can view the log for each export. Export log files are created for each

cassette ID (Tele-File ID) and information is added each time the clips are exported to the same cassette tape.



To clear the contents of the export log display

Each sequence in the export log display can be cleared. Click the DEL button at the beginning of the sequence indication whose contents you want to clear.

To load a clip sequence from the export log display

Open the VTR CONTROL tag display of the IMPORT menu, and click the IMP button in the Sequence Info column to load the selected IN/OUT points to the import clip list.

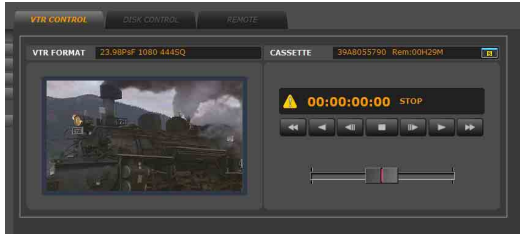
For uncompressed data, it is difficult to specify IN/OUT points while monitoring the picture. By using this function instead, specifying IN/OUT points can be done easily.

Controlling the VTR

VTR CONTROL Window

You can control playback with the tape operation buttons in the VTR CONTROL window in the HOME, IMPORT, and EXPORT menus, and monitor the picture on the HD monitor.

When rotating the mouse wheel on the proxy, the VTR can be played in jog mode.



About the differences in the VTR CONTROL window during processing of compressed data and uncompressed data

When processing compressed data (in HDCAM-SR format), the current position on the tape is displayed in timecode. When processing uncompressed data (DATA format), the current position on the tape is displayed in picture IDs.

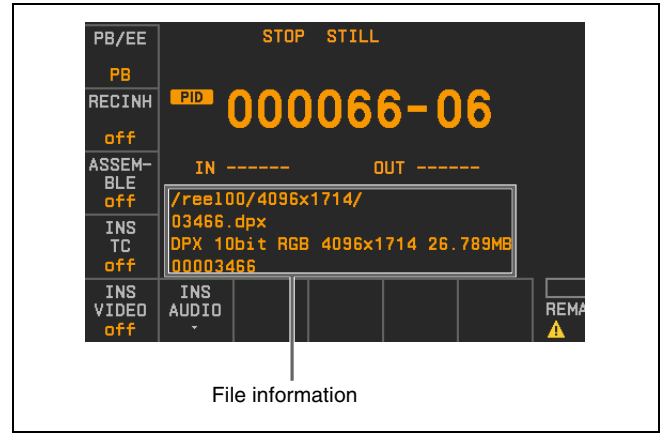
For details on picture IDs, see “Specifying IN/OUT points while playing the tape” on page 19 in “Setting IN/OUT Points on a Tape.”

To display picture IDs on the control panel of the VTR (for uncompressed data only)

Set “635: PICTURE ID DISPLAY” in the VTR SETUP menu to “on.”

To display the file information on the VTR control panel (for uncompressed data only)

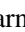
Set “604: TC2 MODE SEL” in the VTR SETUP menu to “off” to display the file information under the timecode indication on the control panel of the VTR.



File information

For details on the VTR SETUP menu of the SRW-5800, refer to the Operation Manual supplied with the SRW-5800.

Warning Messages

When an abnormality is detected on the VTR, a yellow warning mark () flashes to the left of the timecode (or picture ID) in the VTR CONTROL window. Clicking the warning mark displays the message as follows.



For details on warning messages, refer to the Operation Manual supplied with the SRW-5800.

List of Keyboard Shortcuts

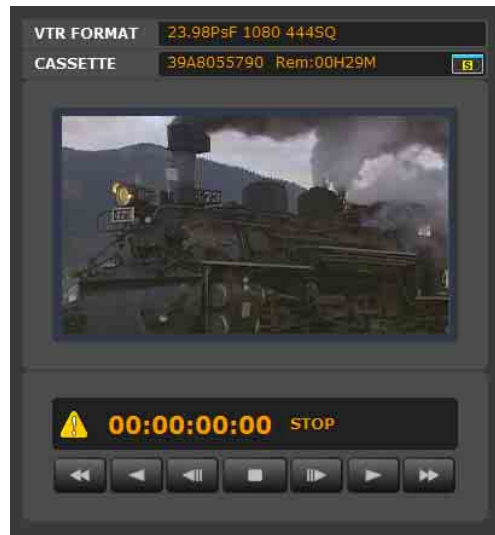
Category	Key	Function
Tape transportation control operations	J ^{a)}	REV/REW
	K ^{a)}	STOP
	L ^{a)}	PLAY/FFWD
	← ^{a)}	STEP REV
	→ ^{a)}	STEP FWD
	Space bar ^{a)}	STOP/PLAY

Category	Key	Function
Menu/tab control operations	Ctrl+Shift+H	Opens the HOME menu.
	Ctrl+Shift+I	Opens the IMPORT menu.
	Ctrl+Shift+E	Opens the EXPORT menu.
	Ctrl+Shift+V	Opens the VTR SETUP menu.
	Ctrl+Shift+P	Opens the PROXY SETUP menu.
	Ctrl+Shift+D	Opens the DISK SETUP menu.
Importing operations	Ctrl+T Ctrl+Shift+T	Moves to the next tag display. Moves to the previous tag display.
	I a)	Registers the current timecode as an IN point.
	O a)	Registers the current timecode as an OUT point.
	Ctrl+I	Goes to an IN point.
	Ctrl+O	Goes to an OUT point.
	Ctrl+\	Previews the selected clip.
	Ctrl+A	Adds the selected sequence to the import list.
	Ctrl+C	Starts importing.
ESC	Cancels importing.	
Exporting operations	I a)	Registers the current timecode as an IN point.
	Ctrl+I	Goes to an IN point.
	Ctrl+\	Previews the selected clip.
	Ctrl+A	Adds the selected sequence to the export list.
	Ctrl+F	Starts exporting.
	ESC	Cancels exporting.
DISK SETUP operations	Ctrl+U	Updates the file list.
	Ctrl+Shift+M	Mounts the NFS server.
	Ctrl+Shift+U	Unmounts the NFS server.

a) Make sure that the cursor is not in the text field when you press the key.

VIEWER Window

Click the VIEWER button to open the VIEWER window.



The VIEWER window can be used in the same manner as the VTR CONTROL window.

For details, see “VTR CONTROL Window” on page 29.

Controlling the On-board Functions

Downconverter Settings

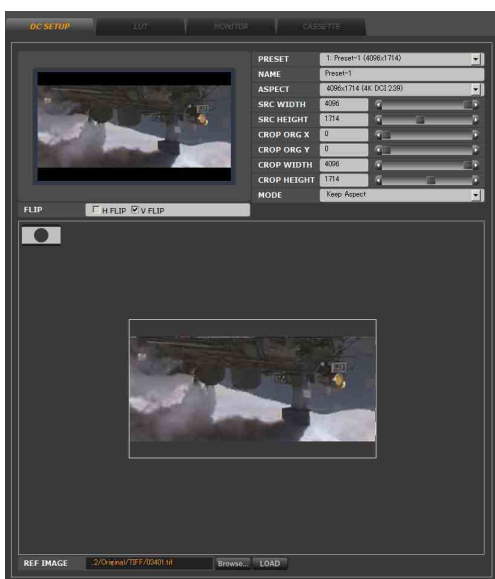
The downconverter settings can be made through the web application. Downconverter settings can be preset and applied to the monitor output signal when the system is operated in uncompressed data format.

For compressed data

When 4K/2K picture files are downconverted to HD format for recording, the settings that are preset in the procedure below are used. Preset1 to preset 8 can be selected during the export of files.

- 1 Access the VTR from the web client to display the web application, click the VTR SETUP menu select button, and then click the DC SETUP tab.

The DC SETUP tag display opens.



- 2 Set the following items.

In the table below, the default setting is indicated by an asterisk (*).

Item	Function/settings
PRESET	Up to eight downconverter settings can be stored as presets (Preset1 to Preset 8). Note Unlike the lookup table banks, downconverter settings are stored on cookies. You can use the COOKIE tag display in the PROXY SETUP menu to store the settings.
NAME	Enter a name for a preset setting here.
ASPECT	Specifies the size of the source picture.
SRC WIDTH	When ASPECT is specified, the width of the source picture is displayed here automatically. When you change the width, ASPECT changes to "User Defined." <i>For details on how to change the setting, see "To enter a new value" on page 32.</i>
SRC HEIGHT	When ASPECT is specified, the height of the source picture is displayed here automatically. When you change the height, ASPECT changes to "User Defined." <i>For details on how to change the setting, see "To enter a new value" on page 32.</i>
CROP ORG X	Specifies the horizontal position of the cropped picture. <i>For details on how to change the setting, see "To enter a new value" on page 32.</i>
CROP ORG Y	Specifies the vertical position of the cropped picture. <i>For details on how to change the setting, see "To enter a new value" on page 32.</i>
CROP WIDTH	Specifies the width of the cropped picture. <i>For details on how to change the setting, see "To enter a new value" on page 32.</i>
CROP HEIGHT	Specifies the height of the cropped picture. <i>For details on how to change the setting, see "To enter a new value" on page 32.</i>

Item	Function/settings
MODE	Specifies whether to allow a change in the aspect ratio of the cropped picture. Keep Aspect*: The aspect ratio of the cropped picture is maintained. Blank sections in the picture are displayed in black. Variable Aspect: The aspect ratio changes according to the cropped picture size and output picture size (HD).
REF IMAGE	Loads the reference image (DPX or CIN file) and displays it as the source picture.
FLIP	Specifies how reference images are flipped. H FLIP: Reference images are flipped horizontally. V FLIP: Reference images are flipped vertically. Note This setting affects only reference images. Main picture files to be imported or exported are not flipped.

When you specify the size and the part of the source picture to be displayed by setting the width, height, horizontal position, and vertical position of the cropped picture, the cropped picture is downconverted and output so that it fits the HD picture size.

To enter a new value

Besides entering a numeric value, you can increase or decrease a value in increments of 1 by clicking the respective arrow to the side of the slide bar. If you hold down the Shift key on the keyboard, the value increases or decreases in units of 10 with each click on an respective arrow. To increase or decrease the value in units of 50, click the respective arrow while holding down the Shift key and Control key on the keyboard. To restore a value to its default, double-click the slide bar.

For uncompressed data

The downconverter settings are applied to the output from the AUX OUTPUT connectors.

In addition to performing step 2 in “For compressed data” on page 31 in “Downconverter Settings”, set the following item.

In the table below, the default setting is indicated by an asterisk (*).

If “Auto” or “Manu” is selected, be sure to click the SET button after performing a setting.

Item	Function/settings
MON DC	Selects the downconverter setting that is applied to the monitor output. Auto*: Settings that match the size of the source picture are automatically applied. At this time, the settings in the table under “For compressed data” (see page 31) become ineffective. Manu: The settings in the table under “For compressed data” (see page 31) are applied to the monitor output when you click the SET button. Manu(i): Any changes made to the settings in the table under “For compressed data” (see page 31) are applied to the monitor output immediately.

Note

When “Manu” or “Manu(i)” is selected, the monitor picture may not be displayed properly if the size of the source picture determined by the ASPECT setting and the size of the playback picture do not match. To avoid this problem when playing a tape containing pictures of various sizes, select “Auto.”

Lookup Table (LUT) Settings

It is possible to load lookup table (LUT) files to the LUT banks of the VTR using the web application.

The eight LUT banks provided in the VTR are used to store LUTs that are used for importing, exporting, and monitor signal output through the AUX OUTPUT connectors.

LUT files stored in the banks are maintained even after the VTR is turned off.

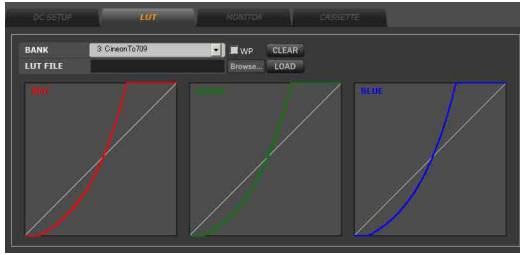
The bit depth of LUT files can be applied 8, 10, 12, and 16-bit data. Note, however, that the lower four of 16 bits are ignored because of the hardware’s 12-bit process.

On the contrary, when the bit depth of the input data is 8 or 10, the signal is linearly interpolated into 12-bit data.

For details on applicable LUT file formats, see “LUT File Formats Applicable to This Board” in “Appendix”.

- 1 Access the VTR from the web client to display the web application, click the VTR SETUP menu select button, and then click the LUT tab.

The LUT tag display appears.



2 Set the following items.

Item	Function/settings
BANK	Selects one of the eight banks (BANK 1 to BANK 8).
WP check box	Check this box when you do not want to overwrite the contents of the selected LUT bank.

3 Click the Browse... button to open the local disk or external media of the web client, then select the LUT file. And then, click the LOAD button.

The selected LUT file is loaded to the LUT bank selected in step 2.

Clearing the contents of a LUT bank

Select the bank whose contents you want to delete, and then click the CLEAR button.

Checking the name of files loaded to the LUT bank from the VTR

Use the NETWORK2 SETUP menu from the OTHERS CHECK menu in the MAINTENANCE menu of the VTR.

For details on the MAINTENANCE menu of the VTR, refer to the Installation Manual supplied with the SRW-5800.

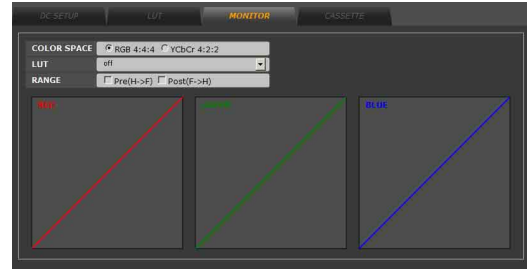
Color Control Function for the Monitor Output

Color control function for the monitor output (AUX OUTPUT connectors) can be set using the web application or through control panel operation on the VTR.

Settings using the web application

1 Access the VTR from the web client to display the web application, click the VTR SETUP menu select button, and then click the MONITOR tab.

The MONITOR tag display appears.



2 Set the following items.

In the table below, the default setting is indicated by an asterisk (*).

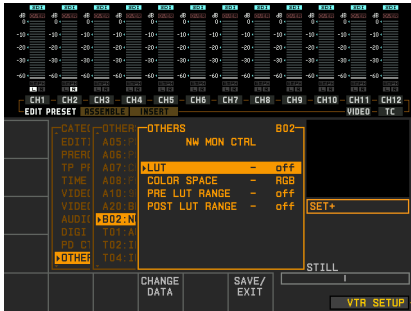
Item	Function/settings
COLOR SPACE	Specifies the monitor output signal type. RGB 4:4:4*: RGB 4:4:4 signal YCbCr: YcbCr 4:2:2 signal
LUT	Selects one of the eight banks. Off*: No LUT is used. BANK1 to BANK8: The LUT in the specified bank is applied to the monitor output.
RANGE	Specifies whether the monitor output signal is extended from Head to Full before the LUT and compressed from Full to Head after the LUT. Pre(H→F) checkbox: Check this box to extend the effective signal range of a monitor output signal with headroom to full range before the LUT. Post(F→H) checkbox: Check this box to compress a full range monitor output signal to the effective signal range of a monitor output signal with headroom after the LUT.

Settings on the control panel of the VTR

Color control function for the monitor output can be set with the NW CTRL MENU from the VTR SETUP menu in the SETUP menu provided on the VTR.

For details on the SETUP menu of the VTR, refer to the Operation Manual supplied with the SRW-5800.

1 On the VTR, display the NW MON CTRL menu from the VTR SETUP menu.



2 Set the following items.

In the table below, the default setting is indicated by an asterisk (*).

Item	Function/settings
LUT	Select one of the eight banks. Off*: No LUT is used. BANK1 to BANK8: The LUT in the specified bank is applied to the monitor output.
COLOR SPACE	Specifies the monitor output signal type. RGB*: RGB 4:4:4 signal YCbCr: YcbCr 4:2:2 signal
PRE LUT RANGE	Specifies whether to change the Head to Full before the LUT. on: Extends the effective signal range of a monitor output signal with headroom to full range before the LUT. off*: Does not extend the effective range of the signal before the LUT.
POST LUT RANGE	Specifies whether to change the Full to Head after the LUT. on: Compresses a full range monitor output signal to the effective signal range of a monitor output signal with headroom after the LUT. off*: Does not compress a full range monitor output signal after the LUT.

Outputting Tele-File Information

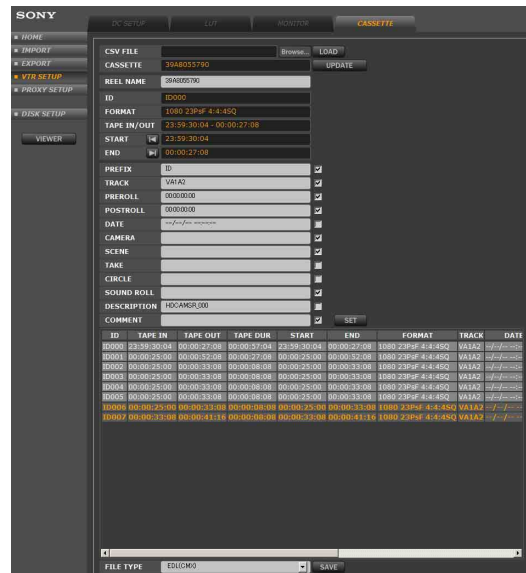
The information (clip list) stored on the Tele-File label of the cassette tape can be loaded and its contents can be confirmed. Then, the clip list can be output as a selected type of EDL file after sorting out the necessary clips.

Note

The Tele-File label is not attached to the standard HDCAM cassette tape that can be used with MXF format. When the Tele-File label is not attached to the cassette tape, this function is not operable.

- 1 Access the VTR from the web client to display the web application, click the VTR SETUP menu select button, and then click the CASSETTE tab.

The CASSETTE tag display appears.



- 2 Perform either of the following to specify the clip list to be loaded.

To load the clip list stored in the CSV file format

Click the Browse... button at the right of the CSV FILE box to and select the clip list that is read from the SRW-5800, SRW-1, or SRW-9000 as a CSV file and stored on the disk of the client machine or the removable media. Then, click the LOAD button to display the selected clip list.

To load the clip list from the cassette tape currently inserted in the SWR-5800

Click the UPDATE button at the right of the CASSETTE box. Then, the clip list from the cassette tape is displayed.

- 3 On the clip list, click to select the line that you want to output.

The selected clip is highlighted. To deselect the clip, click it again.

To select all the clips on the clip list

Double-click anywhere on the list while holding down the Shift key on the keyboard.

To deselect all the clips

Double-click anywhere on the list while holding down the Ctrl key or the Alt key on the keyboard.

To select all the clips with the same VTR format at one time

Double-click a clip with a VTR format that you want to select while holding down the Shift key and the Ctrl key (or the Alt key) on the keyboard.

- 4 If necessary, double-click the clip whose information that you want to edit. Then, edit the information to be written to the EDL.

The information on the selected clip is displayed in the following information boxes.

Item	Explanation
REEL NAME	Reel name. Initially, the cassette ID stored to the Tele-File is shown.
ID	ID of the clip that is currently selected on the clip list
FORMAT	Recording format that is stored to the Tele-File for the currently selected clip
TAPE IN/OUT	Timecode of the IN/OUT points that is stored to the Tele-File for the currently selected clip
START	The value obtained with the timecode displayed in the TAPE IN box and the value in the PREROLL box described below
END	The value obtained with the timecode displayed in the TAPE OUT box and the value in the POSTROLL box described below.

Enter the following items according to the EDL format that you want to select.

To enter the items, click the checkbox at the right of the respective box. Then, click the SET button to reflect edited items to the clip list.

Item	Explanation
PREFIX	Enter the prefix for the clip ID (e.g., ID) here.
TRACK	Enter recorded tracks such as V (video), A1 (audio channel 1), A2 (audio channel 2), and so on.
PREROLL	Enter the preroll time from the TAPE IN point to the timecode displayed in the START box.
POSTROLL	Enter the postroll time from the timecode displayed in the END box to the TAPE OUT point.
DATE	Enter the date when the EDL has been created. Example: 09/10/01 11:23:15 (October 1, 2009 11:23:15)
CAMERA	Enter the model name of the camera used for shooting.
SCENE	Enter the scene name (number).

Item	Explanation
TAKE	Enter the take name (number).
CIRCLE	Enter the okay mark.
SOUND ROLL	Enter the sound roll number.
DESCRIPTION	Enter the detailed information on the scene.
COMMENT	Enter the comments.

- 5 Select the EDL format with the FILE TYPE box, and then click the SAVE button to output the EDL.

In the table below, the default setting is indicated by an asterisk (*).

Item	Explanation
EDL(CMX)*	EDL with CMX format
EDL(GVG)	EDL with GVG format
ALE(Avid Log Exchange)	EDL with Avid compatibility
XML(Final Cut Pro XML)	XML format compatible with the Final Cut Pro
Batch List(Final Cut Pro Batch List)	Batch list for the Final Cut Pro
Direct to Import List	The EDL is directly reflected to the CLIP LIST area of the IMPORT tag display. Note "Direct to Import List" can be selected only when the VTR format is set to compression format.

Other Functions

Checking the Network Functions of This Board

Use the MAINTENANCE menu provided on the VTR to check the network functions of this board.

For details on the MAINTENANCE menu of the VTR, refer to the Installation Manual supplied with the SRW-5800.

Displaying the IP Address of the Web Client

Click the HOME menu selection button, and then click the REMOTE tab.



Log File Management

Click the DISK SETUP menu select button on the web application, and then click the LOG CONTROL tab. Import and export log files can be managed in the LOG CONTROL tag display.



IMPORT LOG section

DIR NAME: Specifies the import log file by the directory.

SHOW: Shows the specified import log file.

DELETE: Deletes the specified import log file.

EXPORT LOG section

CASSETTE ID: Specifies by cassette ID one export log file from among the export log files stored in the directory for log storage (Log Dir) on the mounted NFS server.

SHOW: Shows the specified export log file.

SAVE: Saves the specified export log file and the contents of the thumbnail directory as a tar.gz file to a specified disk on the web client or removable media.

Note

The thumbnail directory is created only when the LOG PROXY box in the DISK CONTROL tag display of the EXPORT menu is set to “Copy to Log Directory.”

For details, see “About the “Copy to Log Directory” setting in LOG PROXY” on page 25.

DELETE: Deletes the specified export log file.

LOG ARCHIVE: Click the Browse... button to specify an export log file on a disk or removable media of the web client, and then click the LOAD button to write the log file to the directory for log storage (Log Dir) on the mounted NFS server.

Using the Export Log Files

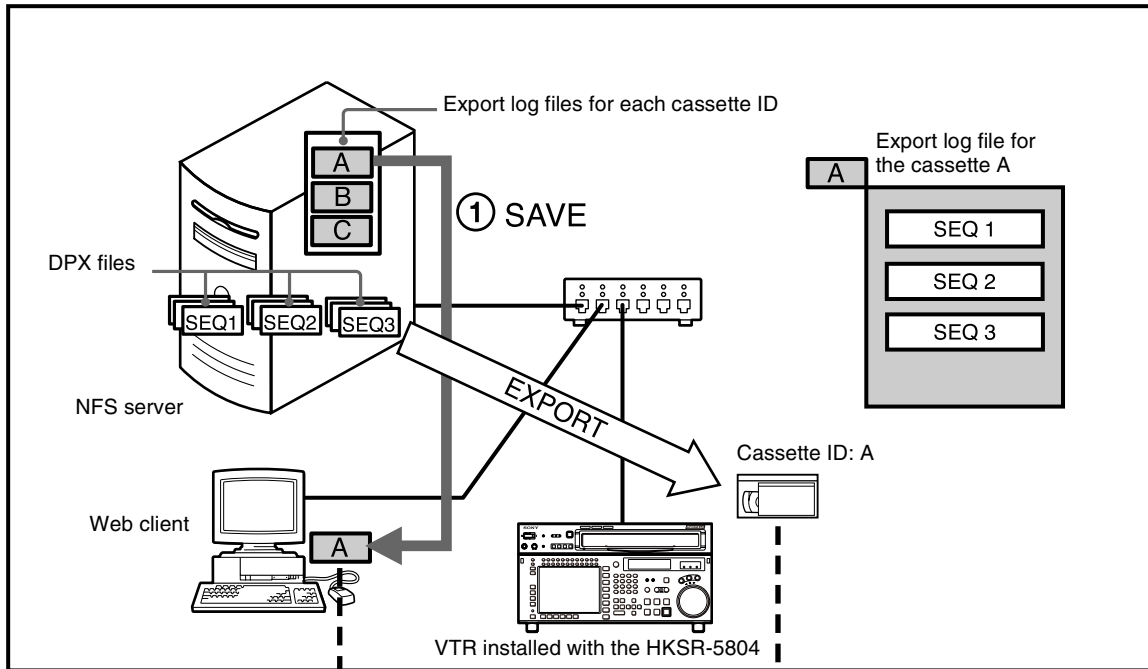
When the tape whose contents are created by exporting in a facility (“Facility 1” in the illustration below) and the export log file of the tape are passed over to another facility (“Facility 2” in the illustration below), the export log file can be used to check the clip files recorded on the tape.

Then, by clicking the IMP button on the export log file display, you can load the selected clip to the import clip list. With this function, you can select specific clips to be imported from all the clips recorded on the tape.

Note

An export log file from another facility cannot be written to the log storage directory by using “LOG ARCHIVE” for the EXPORT LOG box in the LOG CONTROL tag display if the file size is greater than about 3 MB. If this is the case, restore the tar.gz file manually to place the thumbnail directory and XML-format export log file into the export log directory on the NFS server (.sony_srw/log/export/).

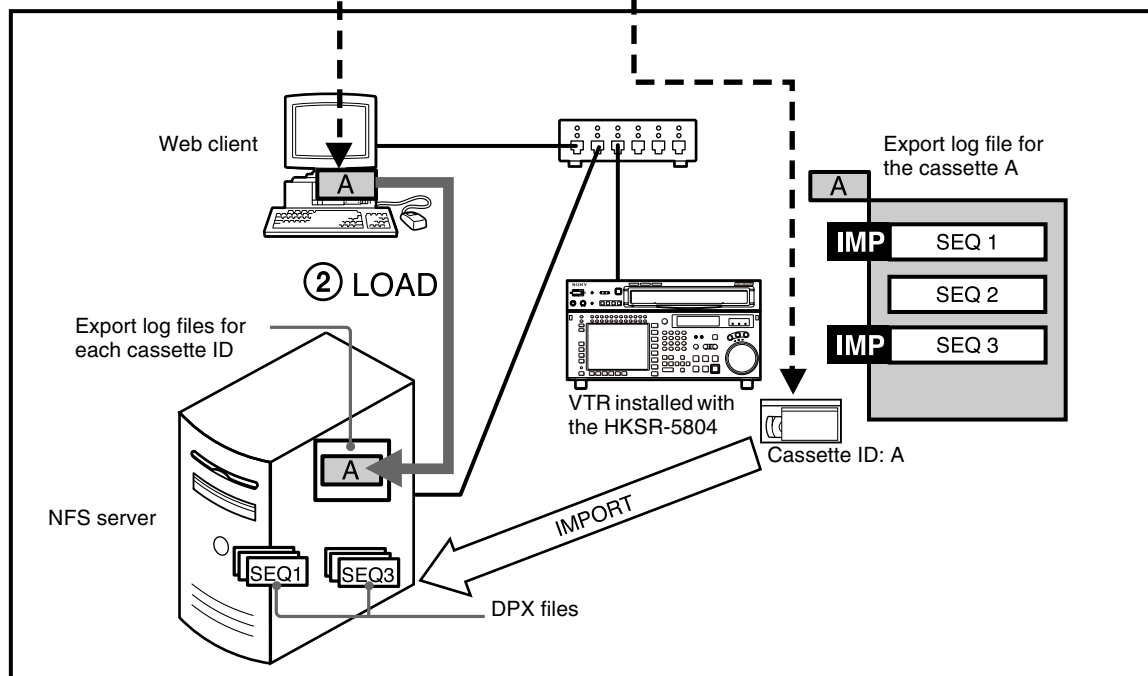
Facility 1

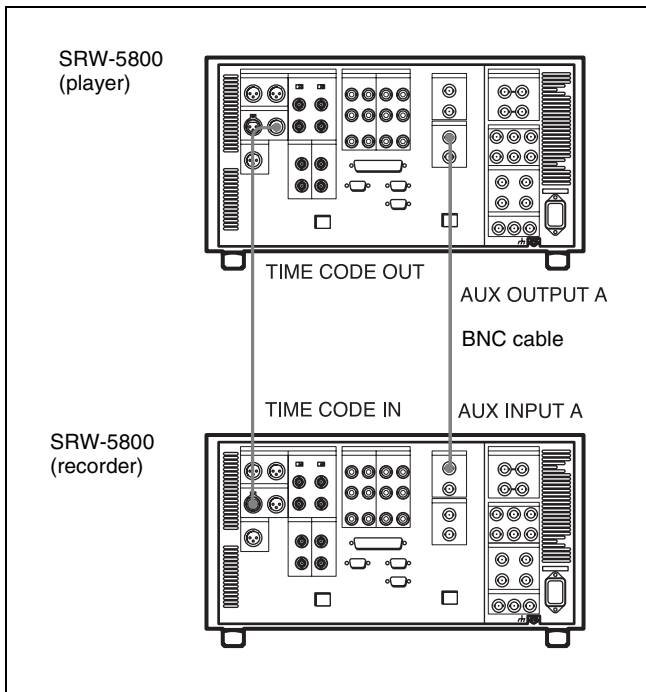


E-mail or removable media

Cassette ID: A

Facility 2





“B01: NW I/O mode” in the VTR SETUP menu is set to “DUB”. Be sure to set this item to “MON” after dubbing finishes.

- In the case of the 3G-SDI format, this board does not support dubbing through the AUX connectors.

Note

When the menu item “005: SERVO/AV REFERENCE select” in the VTR SETUP menu is set to “ext.”, input external reference signal to the REF. INPUT 1 connector on both the player and the recorder.

- 1 Set the VTR SETUP menu items on the player and recorder as follows.

Player:

Set sub item “SDI mode” in “B01: NW I/O mode” to “DUB”.

Recorder:

- Set sub item “SDI mode” in “B01: NW I/O mode” to “MON”.
- Set “607: TCG REGENE SOURCE select” to “ext-LTC”.

Note

When sub item “SDI mode” in “B01: NW I/O mode” is set to “DUB”, a 4:2:2 YUV monitor signal is output from the AUX OUTPUT B connector.

- 2 Insert the original cassette into the player, and insert a recordable cassette into the recorder.
- 3 Start playback on the player, and then start recording on the recorder.

Notes

- In the case of uncompressed data, import or export cannot be carried out when sub item “SDI mode” in

Specifications

Input connectors

AUX INPUT A: BNC (1)
B: BNC (1)
HD SDI (1.485 Gbps)
Conforms to SMPTE292M, 372M/ARIB
S004B

Output connectors

AUX OUTPUT A: BNC (1)
B: BNC (1)
HD SDI (1.485 Gbps, 2.970 Gbps)
Conforms to SMPTE292M, 372M/ARIB
S004B, SMPTE424M

Network connector

NETWORK 2 RJ-45 modular jack
1000Base-T (conforming to IEEE802-
3ab)

Network specifications

Interface 1000Base-T (conforming to IEEE802-
3ab)
Jumbo frame (up to 9000 bytes)
Protocol TCP/IP, UDP/IP
Network file system client
NFS V3/V2
CIFS

Applicable formats

(HDCAM tapes are supported only for importing the MXF files.)

VTR format 1080 422/444SQ/444HQ 23.98 PsF, 24
PsF, 25 PsF, 29.97 PsF, 30 PsF, 50i,
59.94i, 60i
DATA 29.97 PsF, 25 PsF
File format DPX RGB/YcbCr 8/10/16 bits
CIN RGB 8/10/16 bits
TIFF RGB 8/16 bits
(Upper limit of picture size is 4,096 ×
3,112 pixels; must be a 1-element file)
MXF (Importing from 422 format and
HDCAM tapes are supported.)

Note

To handle the MXF files, the VTR must be an SRW-58002 (serial number: 12001 or later). Or, the VTR must be equivalent to SRW-58002 by having the optional board such as HKSR-58UK SRW Upgrade Kit installed.

The optional HKSR-5802 board is required for the VTR to play the HDCAM tapes.

On-board functions

1D LUT, downconverter, color space conversion

Confirmed operational environment

Browser Firefox, Internet Explorer, Safari
NFS server Redhat Linux E5, Mac OS v10.6
CIFS server Windows XP, Windows 7

Supplied accessories

Operation Manual (CD-ROM) (1)
Installation Guide (1)
Installation Manual (1)

Recommended accessory

GbETHER connection cable (UTP category 5e or 6)

Design and specifications are subject to change without notice.

Notes

- Always make a test recording, and verify that it was recorded successfully.
SONY WILL NOT BE LIABLE FOR DAMAGES OF ANY KIND INCLUDING, BUT NOT LIMITED TO, COMPENSATION OR REIMBURSEMENT ON ACCOUNT OF FAILURE OF THIS UNIT OR ITS RECORDING MEDIA, EXTERNAL STORAGE SYSTEMS OR ANY OTHER MEDIA OR STORAGE SYSTEMS TO RECORD CONTENT OF ANY TYPE.
- Always verify that the unit is operating properly before use. SONY WILL NOT BE LIABLE FOR DAMAGES OF ANY KIND INCLUDING, BUT NOT LIMITED TO, COMPENSATION OR REIMBURSEMENT ON ACCOUNT OF THE LOSS OF PRESENT OR PROSPECTIVE PROFITS DUE TO FAILURE OF THIS UNIT, EITHER DURING THE WARRANTY PERIOD OR AFTER EXPIRATION OF THE WARRANTY, OR FOR ANY OTHER REASON WHATSOEVER.

Appendix

LUT File Formats Applicable to This Board

Examples of the five lookup table (LUT) file formats applicable to this board are shown below.

Note

Line numbers (“Lx” in the tables below) do not appear in the actual LUT files.

LUT file type 1: R, G, and B have the same value (the same curve)

“LUT: 1 1024” in the header indicates one output data block (common to R, G, and B) corresponding with the 10-bit (1024) input data.

The bit depth of the output is determined by the maximum output value.

(This is an example of 10-bit input and 10-bit output.)

```
# Comment
LUT: 1 1024
# (Line No.)    Output value
    L1           0
    L2           0
    L3           1
    .
    .
    .
L1023          1023
L1024          1023
```

LUT file type 2: R, G, and B have individual values (individual curves) and are aligned vertically in the order of R, G, B

“LUT: 3 1024” in the header indicates three separate output data blocks (for R, G, and B) corresponding with the 10-bit (1024) input data.

The bit depth of the output is determined by the maximum output value.

The output values on lines L1 to L1024 are R values, the values on lines L1025 to L2048 are G values, and the values on lines L2049 to L3072 are B values.

(This is an example of 10-bit input and 10-bit output.)

```
# Comment
LUT: 3 1024
# (Line No.)    Output value
    L1           0
    L2           0
    L3           1
    .
    .
    .
L1023          1023
L1024          1023
L1025           0
L1026           0
L1027           1
    .
    .
    .
L2047          1023
L2048          1023
L2049           0
L2050           0
L2051           0
    .
    .
    .
L3071          1022
L3072          1023
```

LUT file type 3: R, G, and B have individual values (individual curves) and are aligned horizontally

“LUT10” in the header indicates the bit depth of the output is 10 bits.

The bit depth of the input is determined by the maximum number of lines.

(This is an example of 10-bit input and 10-bit output.)

```

# Comment
LUT10
# (Line No,) Input value Output R Output G Output B
    L1      0      2      2      2
    L2      1      2      2      2
    L3      2      2      2      2
      .
      .
      .
L1023    1022    1023    1023    1023
L1024    1023    1023    1023    1023

```

LUT file type 4: R, G, and B have individual values (individual curves) and are aligned horizontally
The bit depth is not indicated in the header. It is automatically determined by the number of lines and their values.
(This is an example of 10-bit input and 10-bit output.)

```

# Comment
# (Line No,) Input value Output R Output G Output B
    L1      0      2      2      2
    L2      1      2      2      2
    L3      2      2      2      2
      .
      .
      .
L1023    1022    1023    1023    1023
L1024    1023    1023    1023    1023

```

LUT file type 5: R, G, and B have individual values (individual curves) and are aligned horizontally
The bit depth is not indicated in the header. It is automatically determined by number of lines and their values.
There are no lines for input values.
(This is an example of 10-bit input and 10-bit output.)

```

# Comment
# (Line No,) Output R Output G Output B
    L1      2      2      2
    L2      2      2      2
    L3      2      2      2
      .
      .
      .
L1023    1023    1023    1023
L1024    1023    1023    1023

```

Job File Samples

Four samples of job files used for automatic execution are shown in the succeeding pages. You can copy these samples and edit them as necessary on an external editor to create your own job files.

A comment (`<!-- xxxxx -->`) is indicated below each element as an explanation of the element.

Example of a comment:

```

<mode>1</mode>
<!-- 1:Codec Import/2:Codec Export/3:UC Import/4:UC Export -->

```

Note

Errors in description in a job file may result in unforeseen operations during automatic execution.

For details on actual operations related to automatic executions, see “Automatic Execution Using a Job File” on page 38.

Sample 1 Importing compressed data

```
<?xml version="1.0" encoding="UTF-8"?>
<jobinfo>
  <general>
    <mode>1</mode>
    <!-- 1:Codec Import/2:Codec Export/3:UC Import/4:UC Export -->
    <log>
      <control></control>
      <!-- 0:disable/*1:enable(Log Dir)/2:enable(Selected Dir) -->
      <text></text>
      <!-- 30 characters -->
    </log>
    <proxy>
      <!-- Proxy Setting for GUI/AutoGen -->
      <type></type>
      <!-- 0:BMP/*1:JPG -->
      <size></size>
      <!-- 0:160/*2:320/3:640 -->
      <dirmode></dirmode>
      <!-- 0:Same as Main Files/*1:Proxy Directory/2:Resolution Directory -->
      <gen></gen>
      <!-- 0:disable/1:enable/*5:enable(as Temporarily) -->
    </proxy>
    <abort></abort>
    <!-- 0:disable/*1:enable -->
  </general>
  <sequence>
    <!-- You can add up to 1000 sequences. -->
    <tc>
      <in></in>
      <!-- HHMMSSFF -->
      <!--For dropframe, set DF bit(bit6 of frame) e.g. 00:00:00,00 = 00000040-->
      <out></out>
      <!-- HHMMSSFF -->
      <!--For dropframe, set DF bit(bit6 of frame) e.g. 00:00:00,00 = 00000040-->
    </tc>
    <proc>
      <range></range>
      <!-- 0:Head->Full/1:Head->Head/*2:Full->Full -->
      <lut></lut>
      <!-- *0:off/1-8:Bank n -->
      <hflip></hflip>
      <!-- *0:disable/1:enable -->
      <vflip></vflip>
      <!-- *0:disable/1:enable -->
    </proc>
    <main>
      <type></type>
      <!-- *1:DPX(RGB)/3:CIN/4:TIFF/5:DPX(YCbCr/422)/8:MXF(SR)/9:MXF(SR-Lite)/255:NONE -->
      <depth></depth>
      <!--Bit Depth (8,10,16)-->
      <name>
        <dir></dir>
        <!-- 128 characters(depends on full pathname) -->
        <!--e.g.) /import_clip/-->
        <base></base>
        <!--base name of clip-->
        <!-- 32 characters -->
        <sid></sid>
        <!-- 0:No Sub ID/*1:Add Sub ID -->
        <dirmode></dirmode>
        <!-- 0:Use Selected Directory/*1:Make New Directory -->
        <cid></cid>
        <!-- *0:No Cas ID Dir/1:Add Cas ID Dir -->
        <tcid></tcid>
        <!-- 0:Direct Input Start ID/*1:Make Start ID from TC -->
        <start></start>
        <!-- Start ID -->
        <digit></digit>
        <!-- 1-10 -->
        <delimiter></delimiter>
        <!-- 0: '_' (Under Bar)/*1: '.' (Period)/2: '-' (Minus) -->
      </name>
    </main>
  </sequence>
  <audio>
    <ch></ch>
  </audio>
</jobinfo>
```

```
<!-- 0/2/4/6/8/10/12/*255(auto) (for MXF only) -->
</audio>
<header>
<transfer></transfer>
<!-- 0:User Defined/1:Printing Density/*2:Linear/3:Logarithmic/4:Unspecified Video/5:SMPTE 274M/6:ITU-R 709-4 -->
<color></color>
<!--(DPX) 0:User Defined/1:Printing Density/4:Unspecified Video/*5:SMPTE 274M/6:ITU-R 709-4 -->
<!--(CIN) 1:Printing Density/*4:CCIR-XA/11(Rec.709) -->
<meta></meta>
<!-- *0:Off/1:All Data/2:Keykode Only -->
<reel>
<mode></mode>
<!-- *0:Auto/1:Manual/2:Cassette ID -->
<name></name>
<!-- 30 characters (tfid:Telefile ID) -->
<field></field>
<!-- 0:Creator Field(DPX Only)/*1:Input Device Name Field/2:TV Reserved Field(DPX Only) -->
</reel>
<tc></tc>
<!-- 0*:LTC/1:VITC/2:Recounted TC (for MXF only) -->
</header>
<proxy>
<type></type>
<!-- 0:BMP/*1:JPG/2:none/3:Temporarily -->
<size></size>
<!-- 0:160/*2:320/3:640 -->
<quality></quality>
<!-- 0-100 *80 -->
</proxy>
</sequence>
</jobinfo>
```

Sample 2 Exporting compressed data

```
<?xml version="1.0" encoding="UTF-8"?>
<jobinfo>
  <general>
    <mode>2</mode>
    <!-- 1:Codec Import/2:Codec Export/3:UC Import/4:UC Export -->
    <log>
      <control></control>
      <!-- 0:disable/*1:enable(Log Dir)/2:enable(Selected Dir) -->
      <proxy></proxy>
      <!-- 0:Link to Original File/*2:Copy to Log Directory -->
      <text></text>
      <!-- 30 characters -->
    </log>
    <proxy>
      <!-- Proxy Setting for GUI/AutoGen -->
      <type></type>
      <!-- 0:BMP/*1:JPG -->
      <size></size>
      <!-- 0:160/*2:320/3:640 -->
      <dirmode></dirmode>
      <!-- 0:Same as Main Files/*1:Proxy Directory/2:Resolution Directory -->
      <gen></gen>
      <!-- 0:disable/1:enable/*5:enable(as Temporarily) -->
    </proxy>
    <abort></abort>
    <!-- 0:disable/*1:enable -->
    <edit>
      <mode></mode>
      <!-- *0:Insert/1:Assemble/2:First Rec -->
      <tcmode></tcmode>
      <!-- *0:Preset/1:File Number/2:File Header(DPX Only) -->
      <sg></sg>
      <!-- *10:Black/1:100% Color Bar/3:SMPTE Color Bar -->
      <tc>
        <!-- Edit TC Info -->
        <in></in>
        <!-- HHMMSSFF -->
        <!-- For dropframe, set DF bit(bit6 of frame) e.g. 00:00:00,00 = 00000040 -->
      </tc>
    </edit>
  </general>
  <sequence>
    <!-- You can add up to 1000 sequences. -->
    <proc>
      <range></range>
      <!-- 1:Head->Head/*2:Full->Full/3:Full->Head -->
      <lut></lut>
      <!-- *0:off/1-8:Bank n -->
      <hflip></hflip>
      <!-- *0:disable/1:enable -->
      <vflip></vflip>
      <!-- *0:disable/1:enable -->
      <meta></meta>
      <!-- *0:Off/1:Original Line/2:VTR Line -->
    </proc>
    <dc>
      <control></control>
      <!-- *0:auto/1-8:Preset -->
      <srcwidth></srcwidth>
      <!-- 1280-4096 -->
      <srcheight></srcheight>
      <!-- 720-3112 -->
      <cropx></cropx>
      <!-- 0-4096 -->
      <copy></copy>
      <!-- 0-3112 -->
      <cropwidth></cropwidth>
      <!-- 25-4096 -->
      <cropheight></cropheight>
      <!-- 17-3112 -->
      <mode></mode>
      <!-- *0:Keep Aspect/1:Variable Aspect -->
    </dc>
  </file>
  <name>
```

```
<dir></dir>
<!-- 128 characters(depends on full pathname)-->
<!--e.g.) /export_clip/-->
<base></base>
<!-- 32 characters -->
<start></start>
<!-- Start ID -->
<end></end>
<!-- End ID -->
<digit></digit>
<!-- 1-10 -->
<ext></ext>
<!-- 8 characters(case sensitive) with '.' -->
<!--e.g.) .dpx-->
</name>
<tc>
<!-- For insert editing using file TC -->
<in></in>
<!-- HHMMSSFF -->
</tc>
<min></min>
<!-- Minimum filesize in this sequence (byte)-->
<max></max>
<!-- Maximum filesize in this sequence (byte)-->
<pack></pack>
<!-- *0:Align each line/1:No padding -->
<depth></depth>
<!-- Bit Depth (8,10,16)-->
<color></color>
<!-- *0:RGB/2:CBYCRY -->
<proxy>
<!-- Existing proxy informatins for this sequence -->
<type></type>
<!-- 0:BMP/1:JPG/2:NONE -->
<size></size>
<!-- 0:160/2:320/3:640 -->
<dirmode></dirmode>
<!-- 0:Same as Main Files/1:Proxy Directory/2:Resolution Directory -->
</proxy>
</file>
</sequence>
</jobinfo>
```

Sample 3 Importing uncompressed data

```
<?xml version="1.0" encoding="UTF-8"?>
<jobinfo>
  <general>
    <mode>3</mode>
    <!-- 1:Codec Import/2:Codec Export/3:UC Import/4:UC Export -->
    <log>
      <control></control>
      <!-- 0:disable/*1:enable(Log Dir)/2:enable(Selected Dir) -->
      <text></text>
      <!-- 30 characters -->
    </log>
    <proxy>
      <!-- Proxy Setting for GUI/AutoGen -->
      <type></type>
      <!-- 0:BMP/*1:JPG -->
      <size></size>
      <!-- 0:160/*2:320/3:640 -->
      <dirmode></dirmode>
      <!-- 0:Same as Main Files/*1:Proxy Directory/2:Resolution Directory -->
      <gen></gen>
      <!-- 0:disable/1:enable/*5:enable(as Temporarily) -->
    </proxy>
    <abort></abort>
    <!-- 0:disable/*1:enable -->
  </general>
  <sequence>
    <!-- You can add up to 1000 sequences. -->
    <pid>
      <in></in>
      <!-- 000000 - 999999 -->
      <out></out>
      <!-- 000000 - 999999 -->
    </pid>
    <main>
      <dir></dir>
      <!-- 128 characters(depends on full pathname) -->
      <!--e.g.) /import_clip/-->
      <type></type>
      <!-- *128:Same as Original/255:NONE(Proxy Only) -->
      <dirmode></dirmode>
      <!-- *0:Org Structure/1:Org Structure(Under Selected Dir)/2:All Files into Selected Directory -->
      <overwrite></overwrite>
      <!-- *0:Keep Existing Files/1:Overwrite Existing Files -->
    </main>
    <proxy>
      <type></type>
      <!-- 0:BMP/*1:JPG/2:none/3:Temporarily -->
      <size></size>
      <!-- 0:160/*2:320/3:640 -->
      <quality></quality>
      <!-- 0-100 *80 -->
    </proxy>
  </sequence>
</jobinfo>
```

Sample 4 Exporting uncompressed data

```
<?xml version="1.0" encoding="UTF-8"?>
<jobinfo>
  <general>
    <mode>4</mode>
    <!-- 1:Codec Import/2:Codec Export/3:UC Import/4:UC Export -->
    <log>
      <control></control>
      <!-- 0:disable/*1:enable(Log Dir)/2:enable(Selected Dir) -->
      <proxy></proxy>
      <!-- 0:Link to Original File/*2:Copy to Log Directory -->
      <text></text>
      <!-- 30 characters -->
    </log>
    <proxy>
      <!-- Proxy Setting for GUI/AutoGen -->
      <type></type>
      <!-- 0:BMP/*1:JPG -->
      <size></size>
      <!-- 0:160/*2:320/3:640 -->
      <dirmode></dirmode>
      <!-- 0:Same as Main Files/*1:Proxy Directory/2:Resolution Directory -->
      <gen></gen>
      <!-- 0:disable/1:enable/*5:enable(as Temporarily) -->
    </proxy>
    <abort></abort>
    <!-- 0:disable/*1:enable -->
    <edit>
      <mode></mode>
      <!-- *0:Insert/1:Assemble/2:First Rec -->
      <sg></sg>
      <!-- *10:Black/1:100% Color Bar/3:SMPTE Color Bar -->
      <pid>
        <!-- Edit PID Info -->
        <in></in>
        <!-- 000000 - 999999 -->
      </pid>
    </edit>
  </general>
  <sequence>
    <!-- You can add up to 1000 sequences. -->
    <dc>
      <srcwidth></srcwidth>
      <!-- 1280-4096 -->
      <srcheight></srcheight>
      <!-- 720-3112 -->
    </dc>
    <file>
      <name>
        <dir></dir>
        <!-- 128 characters(depends on full pathname) -->
        <!--e.g.) /export_clip/-->
        <base></base>
        <!--base name of clip-->
        <!-- 32 characters -->
        <start></start>
        <!-- Start ID -->
        <end></end>
        <!-- End ID -->
        <digit></digit>
        <!-- 1-10 -->
        <ext></ext>
        <!-- 8 characters(case sensitive) with '.' -->
        <!--e.g.) .dpx-->
      </name>
      <min></min>
      <!-- Minimum filesize in this sequence (byte)-->
      <max></max>
      <!-- Maximum filesize in this sequence (byte)-->
      <pack></pack>
      <!-- *0:Align each line/1:No padding -->
      <depth></depth>
      <!-- Bit Depth (8,10,16)-->
      <extrabit></extrabit>
      <!-- *0:Ignore/1:Keep -->
      <color></color>
```

```
<!-- *0:RGB/2:CBYCRY/5:Data(non-Image) -->
<proxy>
<!-- Existing proxy informatins for this sequence -->
  <type></type>
  <!-- 0:BMP/1:JPG/2:NONE -->
  <size></size>
  <!-- 0:160/2:320/3:640 -->
  <dirmode></dirmode>
  <!-- 0:Same as Main Files/1:Proxy Directory/2:Resolution Directory -->
</proxy>
</file>
</sequence>
</jobinfo>
```

The material contained in this manual consists of information that is the property of Sony Corporation and is intended solely for use by the purchasers of the equipment described in this manual.

Sony Corporation expressly prohibits the duplication of any portion of this manual or the use thereof for any purpose other than the operation or maintenance of the equipment described in this manual without the express written permission of Sony Corporation.

Trademarks

- Windows and Internet Explorer are registered trademarks of Microsoft Corporation in the United States and/or other countries.
- Mac OS, Safari, and Final Cut Pro are trademarks of Apple Inc., registered in the U.S. and other countries.
- Firefox is a registered trademark of the Mozilla Foundation in the United States and/or other countries.
- Linux is a registered trademark of Linus Torvalds in the U.S. and other countries.
- Red Hat is a trademark of Red Hat Inc. in the U.S. and other countries.
- Cineon is a registered trademark of Eastman Kodak Co.
- Avid is a trademark or registered trademark of Avid Technology, Inc. or its subsidiaries in the United States and/or other countries.
- Other system names, products names, and company names appearing in this manual are trademarks or registered trademarks of their respective holders. In this manual, such names are not indicated by ® or TM marks.

